

SALT LAKE CITY AREA/INTEGRATED PROJECTS

Power generated at the Colorado River Storage Project and from the Collbran and Rio Grande projects was combined into the Salt Lake City Area/Integrated Projects on Oct. 1, 1987 and is marketed under the Post-2004 General Power Marketing and Allocation Criteria.

SLCA/IP's 2022 net generation was 3.5 billion kilowatt-hours, or about 36% lower than average net generation. Average net generation for the integrated projects since 1992 is about 5.4 billion kWh.

SLCA/IP power marketed by WAPA decreased from 4.3 billion kilowatt-hours in FY 2021 to 3.5 billion kilowatt-hours in FY 2022. The decrease is due to low water elevations at CRSP reservoirs in FY 2022 and maintenance requirements at some of the generating units. This year, power revenues increased by 5.9% from \$204.2 million in FY 2021 to \$216.2 million. For FY 2022, WAPA purchased 1.4 billion kilowatt-hours to supplement firm contractual requirements and other obligations, approximately 0.6 billion kWh lower than was purchased the previous year. Power revenues and purchase power totals include hydro power sales and Western Replacement Power/Western Replacement Firming.

Collbran Project

The Collbran Project, located in west-central Colorado about 35 miles northeast of Grand Junction near the town of Collbran, was authorized by Congress on July 3, 1952. Construction of the project started in 1957 and was essentially completed in 1962.

Collbran developed a major part of the unused water of Plateau Creek and its principal tributaries for irrigation, flood control, recreational and fish and wildlife benefits. It includes several small diversion dams, 34 miles of canals, 19 miles of pipeline and two powerplants

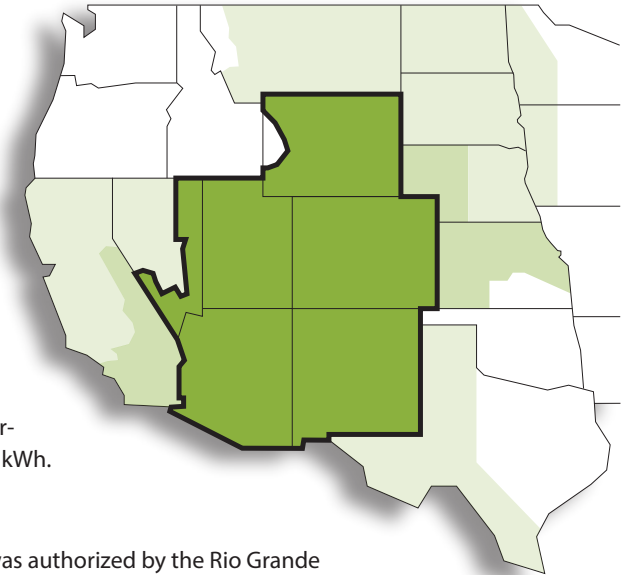
(Upper and Lower Molina) with a combined capacity of 14 megawatts. Net generation in FY 2022 was 32 million kWh. The five-year average generation is 28.3 million kWh.

Rio Grande Project

The Rio Grande Project was authorized by the Rio Grande Reclamation Project Act of Feb. 25, 1905. The project is located on the Rio Grande River in south-central New Mexico. Elephant Butte Dam, 125 miles north of El Paso, Texas, was completed in 1916. Caballo Dam, a flood control and reregulating reservoir, located 13 miles downstream, was added to the project in 1938.

Elephant Butte Powerplant and the 115-kV transmission system were added in 1940 and 1952, respectively. The transmission system was sold to the Plains Electric Generation and Transmission Cooperative in 1979. Hot Springs Substation was sold to Truth or Consequences, New Mexico, in 1984. The three-unit powerplant has an operating capacity of 28 MW.

Elephant Butte Powerplant's FY 2022 net generation was 18 million kWh. The five-year average is 34.7 million kWh.



Colorado River Storage Project

The Colorado River Storage Project was authorized by the Colorado River Storage Project Act of April 11, 1956. It consists of four major storage units: Glen Canyon on the Colorado River in Arizona near the Utah border; Flaming Gorge on the Green River in Utah near the Wyoming border; Navajo on the San Juan River in northwestern New Mexico near the Colorado border; and the Wayne N. Aspinall unit (formerly Curecanti) on the Gunnison River in west-central Colorado.

CRSP has a combined storage capacity that exceeds 31.9 million acre-feet. The project provides water-use developments in the Upper Colorado River Basin while maintaining water deliveries to the lower Colorado River as required by the Colorado River Compact. Five federal powerplants are associated with the project. Operating capacity of CRSP's 16 generating units is 1,763,000 kW. With an average 4.7 billion kWh of net generation for the past five years, CRSP powerplants provide a portion of the electrical needs of more than five million people spread across Colorado, Utah, New Mexico, Arizona, Nebraska, Nevada and Wyoming. More than 2,319 circuit miles of high-voltage transmission lines deliver power to customers.

Unregulated inflow in Water Year 2022 into Lake Powell during the April-July runoff season was 3.751 million acre-feet, 59% of average. The Bureau of Reclamation's release from Lake Powell was 7.0 million acre-feet. CRSP generation produced 3.4 billion kWh in FY 2022.

Seedskadee

The Seedskadee Project is a Participating Project of CRSP and is located in southwestern Wyoming in the Upper Green River Basin, which is part of the Upper Colorado River Basin. Seedskadee was authorized as a participating project by the CRSP Act of 1956.

The project's Fontenelle Dam and Reservoir were completed in April 1964. Power facilities associated with the dam were completed in January 1966. These included a 10 MW powerplant and switchyard at Fontenelle Dam. Fontenelle Powerplant came online in 1968.

Net generation in FY 2022 was 46.3 million kWh. The five-year average generation is 52.9 million kWh.

Dolores

The Dolores Project is a Participating Project of CRSP and is located in Montezuma and Dolores counties in southwestern Colorado, was authorized for construction as a participating project of the Colorado River Storage Project by Public Law 90-537 on Sept. 30, 1968 and Public Law 98-569 on Oct. 30, 1984. Initial construction of the project began in 1977. This multipurpose project provides 12.8 MW of installed generating capacity along with municipal and industrial water, irrigation water, and recreation and fish and wildlife enhancement. Primary storage is provided by McPhee Dam and Reservoir on the Dolores River.

Powerplants are located on McPhee Dam and Towaoc Canal and generate power for the Colorado River Storage Project power system. McPhee Dam Powerplant operates year-round on fishery releases from McPhee Reservoir, while the Towaoc Canal Powerplant operates from April to October on irrigation water supply conveyed through the canal. The powerplants at McPhee Dam (completed in 1992) and at Towaoc Canal (completed in 1993) can generate 1,283 kW and 11,495 kW, respectively, for use in the CRSP power system. Net generation in FY 2022 was 8.6 million kWh. Five-year average generation is 14.8 million kWh.

SALT LAKE CITY AREA/INTEGRATED PROJECTS

Facilities, Substations

Facility	FY 2022	FY 2021
Substations		
Number of substations	36	36
Number of transformers ¹	41	40
Transformer capacity (kVA) ¹	8,452,300	8,422,300
Land (fee)		
Acres	748.22	748.22
Hectares	302.92	302.92
Land (easement)		
Acres	50.15	50.15
Hectares	20.30	20.30
Land (withdrawal)		
Acres	128.26	128.26
Hectares	51.93	51.93

Facilities, Substations, continued

Facility	FY 2022	FY 2021
Buildings and communication sites		
Number of buildings	78	78
Number of communication sites ²	64	67
Land (fee)		
Acres	38.38	38.38
Hectares	15.54	15.54
Land (easement)		
Acres	8.24	8.24
Hectares	3.34	3.34

¹ One transformer activated.
² Data correction for three retired communication sites.

Transmission Lines

Voltage rating	Arizona		Colorado		New Mexico		Utah		Wyoming		Total	
	FY 2022	FY 2021	FY 2022	FY 2021	FY 2022	FY 2021	FY 2022	FY 2021	FY 2022	FY 2021	FY 2022	FY 2021
345-kV												
Circuit miles	480.77	480.77	284.50	284.50	39.92	39.92	16.92	16.92	36.37	36.37	858.48	858.48
Circuit kilometers	773.56	773.56	457.76	457.76	64.23	64.23	27.22	27.22	58.52	58.52	1,381.29	1,381.29
Acres ¹	8,637.58	8,637.58	7,331.00	7,299.55	590.43	590.43	308.17	308.17	773.72	773.72	17,640.90	17,609.45
Hectares ¹	3,497.00	3,497.00	2,968.02	2,955.29	239.04	239.04	124.77	124.77	313.25	313.25	7,142.08	7,129.35
230-kV												
Circuit miles ²	197.54	199.11	642.31	642.31	57.90	57.90	0.00	0.00	93.72	93.72	991.47	993.04
Circuit kilometers ²	317.84	320.37	1,033.48	1,033.48	93.16	93.16	0.00	0.00	150.80	150.80	1,595.28	1,597.81
Acres ³	2,467.08	2,467.08	8,100.00	8,092.18	1,092.01	1,092.01	0.00	0.00	1,464.00	1,464.00	13,123.09	13,115.27
Hectares ³	998.82	998.82	3,279.36	3,276.19	442.11	442.11	0.00	0.00	592.71	592.71	5,313.00	5,309.83
138-kV												
Circuit miles	0.00	0.00	189.75	189.75	0.00	0.00	115.25	115.25	0.00	0.00	305.00	305.00
Circuit kilometers	0.00	0.00	305.31	305.31	0.00	0.00	185.44	185.44	0.00	0.00	490.75	490.75
Acres ³	0.00	0.00	1,551.05	1,551.05	0.00	0.00	1,074.00	1,066.64	0.00	0.00	2,625.05	2,617.69
Hectares ³	0.00	0.00	627.96	627.96	0.00	0.00	434.82	431.84	0.00	0.00	1,062.78	1,059.80
115-kV												
Circuit miles	0.00	0.00	135.84	135.84	0.00	0.00	0.00	0.00	0.14	0.14	135.98	135.98
Circuit kilometers	0.00	0.00	218.57	218.57	0.00	0.00	0.00	0.00	0.23	0.23	218.80	218.80
Acres ¹	0.00	0.00	1,209.00	1,185.99	0.00	0.00	0.00	0.00	0.00	0.00	1,209.00	1,185.99
Hectares ¹	0.00	0.00	489.47	480.16	0.00	0.00	0.00	0.00	0.00	0.00	489.47	480.16
69-kV and below												
Circuit miles ²	5.65	5.65	20.25	18.17	2.71	2.71	0.00	0.00	0.06	0.06	28.67	26.59
Circuit kilometers ²	9.09	9.09	32.58	29.24	4.36	4.36	0.00	0.00	0.10	0.10	46.13	42.79
Acres	34.06	34.06	329.27	329.27	12.44	12.44	37.69	37.69	0.00	0.00	413.46	413.46
Hectares	13.79	13.79	133.31	133.31	5.04	5.04	15.26	15.26	0.00	0.00	167.40	167.40
Totals												
Circuit miles	683.96	685.53	1,272.65	1,270.57	100.53	100.53	132.17	132.17	130.29	130.29	2,319.60	2,319.09
Circuit kilometers	1,100.49	1,103.02	2,047.70	2,044.36	161.75	161.75	212.66	212.66	209.65	209.65	3,732.25	3,731.44
Acres	11,138.72	11,138.72	18,520.32	18,458.04	1,694.88	1,694.88	1,419.86	1,412.50	2,237.72	2,237.72	35,011.50	34,941.86
Hectares	4,509.61	4,509.61	7,498.12	7,472.91	686.19	686.19	574.85	571.87	905.96	905.96	14,174.73	14,146.54

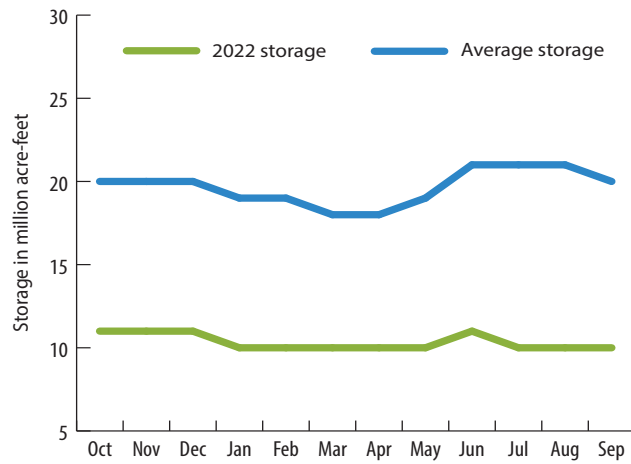
¹ Estes Pole Hill - Estes Lyons transmission line project.

² Minor changes in miles can be due to line or structure re-routes, rebuilds, or reflect updates based on GPS or survey data.

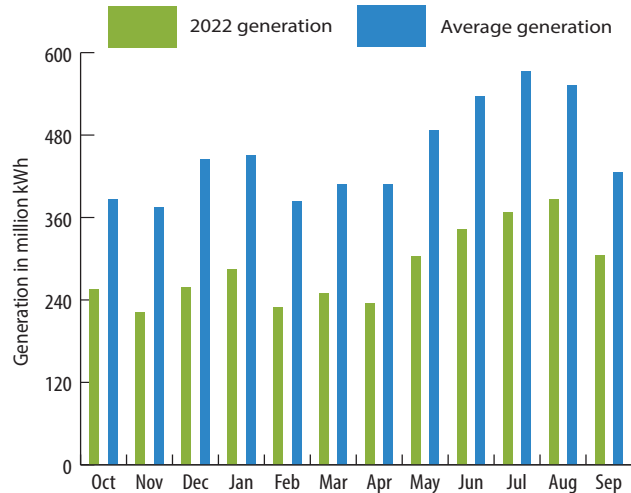
³ New right of way acquired or existing right of way widened.

SALT LAKE CITY AREA/INTEGRATED PROJECTS

Storage



Generation



Active Firm Power Rate Provisions

Fiscal year	Rate schedule designation	Capacity charge (\$/kW of billing demand)	Energy charge not in excess of delivery obligations	Effective date	Annual composite rate
2022	SLIP-F12	5.25	12.36 mills/kWh	12/1/2021	30.51 mills/kWh

Active Transmission and Ancillary Services Rate Provisions

Fiscal year	Rate schedule designation	Rate
2022	SP-PTP9, Firm point-to-point transmission service	\$1.75/kW-month
2022	SP-NFT8, Nonfirm point-to-point transmission service	Mutually agreed by WAPA and purchasing entity up to 2.40 mills/kWh
2022	SP-NW5, Network integration transmission	Network customer's load ratio share times 1/12 total net annual revenue requirement
2022	L-AS1, Scheduling system control and dispatch	Included in PTP rate. A \$20.84 schedule/day charge is assessed to non-firm transmission customers
2022	L-AS2, Reactive supply and voltage-control services	\$0.080/kW-Month
2022	L-AS3, Regulation and frequency response	\$0.166/kW-Month, wind multiplier 145%, solar multiplier 246%, RM schedule
2022	SP-EI5, Energy imbalance	Imbalance between 1.5% and 7.5% is a 10% penalty; imbalance greater than 7.5% is a 25% penalty
2022	SP-SS1, CRSP Surplus Energy and Capacity Products	If product is available, market rates plus administrative costs
2022	SP-SSR5, Spinning and supplemental reserves	Negotiated rate under the Western Systems Power Pool contract
2022	SP-UU2, Unreserved Use	Penalty charge, 200% of CRSP's approved transmission service rate (SP-PTP9)
2022	WC-8, WestConnect regional nonfirm point-to-point transmission service	CRSP, DSW and LAP's nonfirm point-to-point rate converted to on and off-peak rates

Active Marketing Plan

Project	Expiration date
Salt Lake City Area/Integrated Projects	9/30/2024

SALT LAKE CITY AREA/INTEGRATED PROJECTS

Powerplants

State/plant name	Operating agency	River	Initial in-service date	Existing number of units	Installed capacity ¹ FY 2022 (MW)	Actual operating capability (MW) ²		Net generation (GWh) ³	
						FY 2022	FY 2021	FY 2022	FY 2021
Arizona									
Glen Canyon	Reclamation	Colorado	Sep 1964	8	1,320	952	952	2,580	3,345
Colorado									
Blue Mesa	Reclamation	Gunnison	Sep 1967	2	86	79	60	141	185
Crystal	Reclamation	Gunnison	Jun 1978	1	32	30	31	107	138
Lower Molina	Reclamation	Pipeline	Dec 1962	1	5	5	4	12	3
McPhee	Reclamation	Dolores	Jun 1993	1	1	1	1	1	1
Morrow Point	Reclamation	Gunnison	Dec 1970	2	173	160	159	208	248
Towaoc	Reclamation	Canal	Jun 1993	1	11	3	9	8	7
Upper Molina	Reclamation	Pipeline	Dec 1962	1	9	8	7	20	6
New Mexico									
Elephant Butte	Reclamation	Rio Grande	Nov 1940	3	28	14	17	18	15
Utah									
Flaming Gorge	Reclamation	Green	Nov 1963	3	152	144	136	343	312
Wyoming									
Fontenelle	Reclamation	Green	May 1968	1	10	9	9	46	30
Salt Lake City Area/Integrated Projects total				24	1,827	1,405	1,385	3,484	4,290

¹ Installed capacity is the maximum generating capacity of the units' at-unity power factor without exceeding the specified heat rise on each unit and is independent of water constraints.

² Actual operating capability represents the annual average operating capability based on down time for maintenance. Data provided by Reclamation.

³ Net generation is gross plant generation less plant use.

Operating agency:

Reclamation - Bureau of Reclamation, Department of the Interior

Power Sales by Customer Category

Customer category	FY 2022 ¹						FY 2021 ¹				
	Long-term (MWh)	Other (MWh)	Total energy (MWh)	Long-term (\$)	Other (\$)	Total revenue (\$)	Energy (MWh)	Revenue (\$)			
Municipalities	1,782,916	328,709	2,111,625	76,984,482	26,563,309	103,547,791	2,583,380	94,631,861			
Cooperatives	1,598,989	2,574	1,601,563	62,170,582	127,984	62,298,566	2,110,810	61,369,874			
Federal agencies	131,423	17,216	148,639	5,116,487	1,177,732	6,294,219	191,189	6,893,550			
State agencies	297,478	1,214	298,692	10,673,204	43,180	10,716,384	372,767	10,333,741			
Irrigation districts	140,921	0	140,921	6,591,103	0	6,591,103	146,235	4,642,125			
Native American tribes	533,579	4,205	537,784	22,679,836	304,731	22,984,567	681,004	23,113,318			
Investor-owned utilities	0	2,226	2,226	0	219,409	219,409	1,113	58,332			
Power marketers	0	1,014	1,014	0	109,560	109,560	2,322	106,196			
Joint power authorities	0	720	720	0	46,720	46,720	32	1,240			
Independent system operator corporations ²	0	253	253	0	490,427	490,427	0	388,879			
Interproject	0	9,521	9,521	0	694,206	694,206	8,609	408,730			
Project use	85,221	44	85,265	2,190,063	3,060	2,193,123	96,487	2,244,731			
Salt Lake City Area/Integrated Projects total				4,570,527	367,696	4,938,223	186,405,757	29,780,318	216,186,075	6,193,948	204,192,577

¹ Power revenues as presented in this table are \$729,000 and \$520,000 greater than the FY 2022 and FY 2021 sales of electric power revenues presented in the Statements of Revenues and Expenses, and Accumulated Net Revenues due to variances between revenue accrual estimates and actual revenue along with other miscellaneous minor transactions.

² FY 2021 settlements revenues with no associated energy from FY 2020 services provided to California Independent System Operator Corporation.

SALT LAKE CITY AREA/INTEGRATED PROJECTS

Power Sales by State and Customer Category

State/customer category	FY 2022 ¹						FY 2021 ¹	
	Long-term (MWh)	Other (MWh)	Total energy (MWh)	Long-term (\$)	Other (\$)	Total revenue (\$)	Energy (MWh)	Revenue (\$)
Arizona								
Municipalities	107,086	22,119	129,205	6,452,506	1,436,646	7,889,152	132,318	6,863,251
Cooperatives	37,158	1,001	38,159	1,331,636	66,670	1,398,306	50,098	1,391,487
Federal agencies	23,558	128	23,686	1,257,447	7,814	1,265,261	40,985	2,350,727
State agencies	198,124	695	198,819	6,934,838	17,710	6,952,548	264,549	7,257,014
Irrigation districts	110,654	0	110,654	4,383,865	0	4,383,865	144,109	4,316,854
Native American tribes	494,061	3,379	497,440	21,261,176	255,273	21,516,449	628,405	21,639,820
Investor-owned utilities	0	1,508	1,508	0	157,615	157,615	775	47,325
Power marketers	0	105	105	0	7,140	7,140	0	0
Interproject	0	1,722	1,722	0	164,016	164,016	852	68,999
Arizona subtotal	970,641	30,657	1,001,298	41,621,468	2,112,884	43,734,352	1,262,091	43,935,477
California								
Independent system operator corporations ²	0	253	253	0	490,427	490,427	0	388,879
California subtotal	0	253	253	0	490,427	490,427	0	388,879
Colorado								
Municipalities	542,314	491	542,805	18,542,303	13,764	18,556,067	742,029	19,651,644
Cooperatives	1,137,137	1,121	1,138,258	40,757,812	37,734	40,795,546	1,554,433	44,149,676
Federal agencies	6,096	0	6,096	233,221	0	233,221	8,173	242,177
Native American tribes	4,458	0	4,458	156,177	0	156,177	6,072	164,888
Investor-owned utilities	0	470	470	0	22,575	22,575	153	2,986
Power marketers	0	622	622	0	24,550	24,550	2,146	100,426
Interproject	0	7,799	7,799	0	530,190	530,190	7,757	339,731
Project use	13,462	44	13,506	362,155	3,060	365,215	13,024	317,776
Colorado subtotal	1,703,467	10,547	1,714,014	60,051,668	631,873	60,683,541	2,333,787	64,969,304
Nevada								
State agencies	86,442	0	86,442	3,326,040	0	3,326,040	90,698	2,637,171
Native American tribes	2,245	0	2,245	78,637	0	78,637	3,038	82,689
Joint power authorities	0	720	720	0	46,720	46,720	32	1,240
Nevada subtotal	88,687	720	89,407	3,404,677	46,720	3,451,397	93,768	2,721,100

SALT LAKE CITY AREA/INTEGRATED PROJECTS

Power Sales by State and Customer Category, continued

State/customer category	FY 2022 ¹			FY 2021 ¹				
	Long-term (MWh)	Other (MWh)	Total energy (MWh)	Long-term (\$)	Other (\$)	Total revenue (\$)	Energy (MWh)	Revenue (\$)
New Mexico								
Municipalities	122,307	304,141	426,448	4,471,782	25,056,881	29,528,663	491,401	25,993,720
Cooperatives	43,989	0	43,989	1,080,783	0	1,080,783	42,835	1,055,582
Federal agencies	80,132	0	80,132	2,870,701	0	2,870,701	96,210	2,525,759
Native American tribes	29,377	669	30,046	1,063,474	40,593	1,104,067	38,788	1,098,345
Investor-owned utilities	0	0	0	0	0	0	127	5,111
Project use	71,759	0	71,759	1,827,908	0	1,827,908	83,463	1,926,955
New Mexico subtotal	347,564	304,810	652,374	11,314,648	25,097,474	36,412,122	752,824	32,605,472
Utah								
Municipalities ³	992,882	1,942	994,824	46,862,523	54,023	46,916,546	1,192,879	41,434,640
Cooperatives ³	380,597	452	381,049	18,996,437	23,580	19,020,017	463,294	14,769,004
Federal agencies	21,637	1,092	22,729	755,118	53,687	808,805	30,607	952,753
State agencies	12,912	519	13,431	412,326	25,470	437,796	17,520	439,556
Irrigation districts	30,267	0	30,267	2,207,238	0	2,207,238	2,126	325,271
Native American tribes	2,112	157	2,269	73,940	8,865	82,805	2,897	78,584
Investor-owned utilities	0	248	248	0	39,219	39,219	58	2,910
Power marketers	0	0	0	0	0	0	176	5,770
Utah subtotal	1,440,407	4,410	1,444,817	69,307,582	204,844	69,512,426	1,709,557	58,008,488
Wyoming								
Municipalities	18,327	16	18,343	655,368	1,995	657,363	24,753	688,606
Cooperatives	108	0	108	3,914	0	3,914	150	4,125
Federal agencies	0	15,996	15,996	0	1,116,231	1,116,231	15,214	822,134
Native American tribes	1,326	0	1,326	46,432	0	46,432	1,804	48,992
Power marketers	0	287	287	0	77,870	77,870	0	0
Wyoming subtotal	19,761	16,299	36,060	705,714	1,196,096	1,901,810	41,921	1,563,857
Salt Lake City Area/Integrated Projects total	4,570,527	367,696	4,938,223	186,405,757	29,780,318	216,186,075	6,193,948	204,192,577

¹ Power revenues as presented in this table are \$729,000 and \$520,000 greater than the FY 2022 and FY 2021 sales of electric power revenues presented in the Statements of Revenues and Expenses, and Accumulated Net Revenues due to variances between revenue accrual estimates and actual revenue along with other miscellaneous minor transactions.

² FY 2021 settlements revenues with no associated energy from FY 2020 services provided to California Independent System Operator Corporation.

³ FY 2022 Project-use loads and revenues in Utah are 30,424 MWh and \$633,650. Due to billing software constraints, these values are included in the Utah municipalities and cooperatives subtotals.

SALT LAKE CITY AREA/INTEGRATED PROJECTS

Customers by State and Customer Category

State/customer category	FY 2022			FY 2021		
	Long-term	Other	Total	Long-term	Other	Total
Arizona						
Municipalities	4	0	4	4	0	4
Cooperatives	2	2	4	2	2	4
Federal agencies	4	0	4	4	0	4
State agencies	1	0	1	1	0	1
Irrigation districts	13	0	13	13	0	13
Native American tribes	18	0	18	18	0	18
Investor-owned utilities	0	2	2	0	2	2
Power marketers	0	1	1	0	0	0
Arizona subtotal	42	5	47	42	4	46
California						
Independent system operator corporations	0	1	1	0	1	1
California subtotal	0	1	1	0	1	1
Colorado						
Municipalities	15	0	15	15	0	15
Cooperatives	5	1	6	5	1	6
Federal agencies	1	0	1	1	0	1
Native American tribes	2	0	2	2	0	2
Investor-owned utilities	0	2	2	0	2	2
Power marketers	0	2	2	0	3	3
Colorado subtotal	23	5	28	23	6	29
Nevada						
State agencies	1	0	1	1	0	1
Native American tribes	4	0	4	4	0	4
Joint power authorities	0	1	1	0	1	1
Nevada subtotal	5	1	6	5	1	6
New Mexico						
Municipalities	6	0	6	6	0	6
Cooperatives	4	0	4	4	0	4
Federal agencies	4	0	4	4	0	4
Native American tribes	24	0	24	24	0	24
Investor-owned utilities	0	0	0	0	1	1
New Mexico subtotal	38	0	38	38	1	39

Customers by State and Customer Category, continued

State/customer category	FY 2022			FY 2021		
	Long-term	Other	Total	Long-term	Other	Total
Utah						
Municipalities	6	0	6	6	0	6
Cooperatives	1	0	1	1	0	1
Federal agencies	3	0	3	3	0	3
State agencies	2	0	2	2	0	2
Irrigation districts	2	0	2	1	1	2
Native American tribes	3	0	3	3	0	3
Investor-owned utilities	0	1	1	0	1	1
Power marketers	0	0	0	0	1	1
Utah subtotal	17	1	18	16	3	19
Wyoming						
Municipalities	2	0	2	2	0	2
Cooperatives	1	0	1	1	0	1
Federal agencies	0	1	1	0	1	1
Native American tribes	1	0	1	1	0	1
Power marketers	0	1	1	0	0	0
Wyoming subtotal	4	2	6	4	1	5
Salt Lake City Area/Integrated Projects subtotal	129	15	144	128	17	145
Interproject	0	3	3	0	3	3
Project use	4	0	4	4	0	4
Salt Lake City Area/Integrated Projects total¹	133	18	151	132	20	152

¹ Includes one customer in FY 2022 and two customers in FY 2021 with valid active contracts but with no energy sold.

SALT LAKE CITY AREA/INTEGRATED PROJECTS

Summary by Customer Category

Customer category	FY 2022			FY 2021		
	Long-term	Other	Total	Long-term	Other	Total
Municipalities	33	0	33	33	0	33
Cooperatives	13	3	16	13	3	16
Federal agencies	12	1	13	12	1	13
State agencies	4	0	4	4	0	4
Irrigation districts	15	0	15	14	1	15
Native American tribes	52	0	52	52	0	52
Investor-owned utilities	0	5	5	0	6	6
Power marketers	0	4	4	0	4	4
Joint power authorities	0	1	1	0	1	1
Independent system operator corporations	0	1	1	0	1	1
Salt Lake City Area/Integrated Projects subtotal	129	15	144	128	17	145
Interproject	0	3	3	0	3	3
Project use	4	0	4	4	0	4
Salt Lake City Area/Integrated Projects total¹	133	18	151	132	20	152

¹ Includes one customer in FY 2022 and two customers in FY 2021 with valid active contracts but with no energy sold.

Top 5 Customers in Long-term Revenue¹

Rank	Customer	Revenue (\$)	Percent of total sales
1	Tri-State Generation and Transmission Association	37,696,778	20.5
2	Utah Associated Municipal Power Systems	27,295,661	14.8
3	Deseret Generation and Transmission Cooperative	18,996,437	10.3
4	Navajo Tribal Utility Authority	15,559,148	8.4
5	Platte River Power Authority	12,077,971	6.6
Total		111,625,995	60.6

¹ Excludes energy sales and power revenues from interproject and project-use customers.

Top 5 Customers in Long-term Energy Sales¹

Rank	Customer	Energy (MWh)	Percent of total sales
1	Tri-State Generation and Transmission Association	1,050,023	23.4
2	Utah Associated Municipal Power Systems	518,471	11.6
3	Deseret Generation and Transmission Cooperative	380,597	8.5
4	Platte River Power Authority	369,202	8.2
5	Navajo Tribal Utility Authority	332,475	7.4
Total		2,650,768	59.1

¹ Excludes energy sales and power revenues from interproject and project-use customers.

Top 5 Customers in Other Revenue¹

Rank	Customer	Revenue (\$)	Percent of total sales
1	Farmington	15,255,499	52.5
2	Los Alamos County	9,796,344	33.7
3	Page Electric Utility	1,436,646	4.9
4	Warren Air Force Base	1,116,231	3.8
5	California Independent System Operator Corporation	490,427	1.7
Total		28,095,147	96.6

¹ Excludes energy sales and power revenues from interproject and project-use customers.

Top 5 Customers in Other Energy Sales¹

Rank	Customer	Energy (MWh)	Percent of total sales
1	Farmington	176,475	49.3
2	Los Alamos County	127,602	35.6
3	Page Electric Utility	22,119	6.2
4	Warren Air Force Base	15,996	4.5
5	Navajo Tribal Utility Authority	2,197	0.6
Total		344,389	96.2

¹ Excludes energy sales and power revenues from interproject and project-use customers.

SALT LAKE CITY AREA/INTEGRATED PROJECTS

Purchased Power

Supplier	FY 2022 ¹		FY 2021 ²	
	Energy (MWh)	Cost (\$)	Energy (MWh)	Cost (\$)
Non-WAPA suppliers				
Arizona Electric Power Cooperative	69	3,506	1,836	839,094
Arizona Public Service Company	1,220	278,360	400	20,800
Basin Electric Power Cooperative	170,897	9,292,203	330,097	10,985,636
Black Hills Power	39,939	2,926,576	41,147	1,769,327
Brookfield Renewable Energy & Marketing	0	0	430	290,250
Bureau of Indian Affairs - Colorado River Agency	233	9,513	254	11,232
Colorado Springs Utilities	74,424	6,235,708	189,877	11,343,322
Dynasty Power	3,581	536,815	933	95,460
Farmington	305	14,560	75	2,275
Guzman Energy	7,267	549,304	5,139	504,064
Los Angeles County	30	600	0	0
Los Angeles Department of Water and Power	1,762	234,078	7,146	791,255
Macquarie Energy	36,050	2,317,938	16,152	1,188,188
Morgan Stanley Capital Group	22,059	1,934,684	138,435	7,248,942
Nevada Power Company	13,575	1,121,287	5,381	503,098
PacifiCorp	130,536	7,126,022	239,689	8,605,231
Page Electric Utility	107	87,970	0	0
Platte River Power Authority	265,836	14,084,876	228,010	8,954,734
Powerex	25,197	3,939,385	25,361	3,861,730
Public Service Company of Colorado	67,405	3,835,216	77,126	3,550,578
Public Service Company of New Mexico	18,666	1,396,465	9,894	298,597
Rainbow Energy Marketing Corporation	30,154	2,142,580	129,152	6,139,949
Resource Management Services	2,258	94,586	2,370	80,030
Salt River Project	303,994	21,666,405	328,689	19,454,335
Silver State Energy Association	11,877	554,930	1,308	225,104
Tenaska Power Services	300	11,550	0	0
The Energy Authority	34	943	37	370
TransAlta Energy Marketing	9,764	952,751	9,146	2,915,103
Tri-State Generation and Transmission Association	65,983	3,717,143	159,458	5,920,465
Tucson Electric Power Company	12,305	696,936	6,045	209,502
Unisource	0	0	150	5,000
Utah Associated Municipal Power Systems	411	18,963	1,195	50,997
Utah Municipal Power Agency	8,259	527,981	2,434	115,338
Non-WAPA suppliers subtotal	1,324,497	86,309,833	1,957,366	95,980,006

Purchased Power, continued

Supplier	FY 2022 ¹		FY 2021 ²	
	Energy (MWh)	Cost (\$)	Energy (MWh)	Cost (\$)
WAPA Suppliers				
Desert Southwest region	11,890	348,621	1,170	16,419
Loveland Area Projects ³	89,853	6,728,064	91,741	3,797,755
Western Area Colorado Missouri Balancing Authority	45	450	24,254	190,312
WAPA suppliers subtotal	101,788	7,077,135	117,165	4,004,486
Purchased power total	1,426,285	93,386,968	2,074,531	99,984,492

¹ Purchase power as presented in this table is \$11 million less than the FY 2022 purchased power presented in the Statements of Revenues and Expenses, and Accumulated Net Revenues due to the following: \$0.1 million in Southwest Power Pool administrative and miscellaneous fees; \$10.9 million in variances between purchased power accrual estimates and actual purchased power along with other miscellaneous minor transactions.

² Purchase power as presented in this table is \$1 million less than the FY 2021 purchased power presented in the Statements of Revenues and Expenses, and Accumulated Net Revenues due to the following: \$0.1 million in Southwest Power Pool administrative and miscellaneous fees; \$0.9 million in variances between purchased power accrual estimates and actual purchased power along with other miscellaneous minor transactions.

³ Includes purchases made under Interagency Agreement No. 99-SLC-0392.

SALT LAKE CITY AREA/INTEGRATED PROJECTS

Purchased Transmission Services

Supplier	FY2022 ^{1,2}	FY2021 ³
	Cost (\$)	Cost (\$)
Non-WAPA suppliers		
Basin Electric Power Cooperative	0	14
Black Hills Energy	32,477	46,521
Black Hills Energy Colorado Electric Utility Company	229,070	211,890
Bridger Valley Electric Association	145,379	9,034
Delta-Montrose Electric Association	9,798	8,809
Deseret Generation and Transmission Association	759,115	867,192
El Paso Electric Company	73,059	53,334
Empire Electric Association	85,548	85,546
PacifiCorp	2,965,991	3,468,041
Platte River Power Authority	0	709
Public Service Company of Colorado	108,644	56,438
Public Service Company of New Mexico	5,281,038	2,108,837
Salt River Project	1,033,990	1,200,843
Tri-State Generation and Transmission Association	1,169	5,021
Tucson Electric Power Company	236	87
Utah Associated Municipal Power Systems	6,964	0
Non-WAPA suppliers subtotal	10,732,478	8,122,316
WAPA suppliers		
Desert Southwest region	124,337	59,275
Loveland Area Projects	7,740	4,403
Pacific NW-SW Intertie	3,830,514	3,575,797
Western Area Colorado Missouri Balancing Authority	7,289,159	0
WAPA suppliers subtotal	11,251,750	3,639,475
Purchased transmission services total	21,984,228	11,761,791

¹ Purchase transmission services as presented in this table are \$3.1 million less than the FY 2022 purchased transmission services presented in the Statements of Revenues and Expenses, and Accumulated Net Revenues due to the following: \$2.5 million related to Western Energy Imbalance Service costs; \$0.6 million in variances between purchase transmission accrual estimates and actual purchased transmission along with other miscellaneous minor transactions.

² A change was made in FY 2022 to include transmission loss charges in the table instead of as a footnote.

³ Purchase transmission services as presented in this table are \$13.8 million less than the FY 2021 purchased transmission services presented in the Statements of Revenues and Expenses, and Accumulated Net Revenues due to \$14.4 million in transmission loss charges, energy imbalance and scheduling charges; -\$0.6 million in variances between purchase transmission accrual estimates and actual purchased transmission.

SALT LAKE CITY AREA/INTEGRATED PROJECTS

Transmission and Other Operating Revenues

	FY 2022 ¹	FY 2021 ²
	Revenue (\$)	Revenue (\$)
Transmission service		
Firm network transmission service	2,082,587	1,934,238
Firm point-to-point transmission service	9,865,804	11,389,633
Nonfirm point-to-point transmission service	9,796,223	7,400,976
Short term point-to-point transmission service	3,238,720	4,217,675
Transmission losses	4,660,024	3,727,116
Transmission services subtotal	29,643,358	28,669,638
Ancillary service		
Energy imbalance service	2,589,884	2,604,333
Operating reserves - spinning	0	295,714
Reactive supply and voltage control service ³	222,281	12,265
Regulation and frequency response	540,419	599,568

Transmission and Other Operating Revenues

	FY 2022 ¹	FY 2021 ²
	Revenue (\$)	Revenue (\$)
Scheduling and dispatch service	703,210	689,495
Ancillary services subtotal	4,055,794	4,201,375
Other operating revenues ⁴	5,440,847	5,678,578
Transmission and other operating revenues total	39,139,999	38,549,591

¹ Transmission and other operating revenues as presented in this table are \$732,000 greater than the FY 2022 transmission and other operating revenues presented in the Statements of Revenues and Expenses, and Accumulated Net Revenues due to variances between transmission and ancillary revenue accrual estimates and actual transmission and ancillary revenue.

² Transmission and other operating revenues as presented in this table are \$177,000 greater than the FY 2021 transmission and other operating revenues presented in the Statements of Revenues and Expenses, and Accumulated Net Revenues due to variances between transmission and ancillary revenue accrual estimates and actual transmission and ancillary revenue.

³ FY 2021 revenues shown for reactive supply and voltage control services are lower due to true up.

⁴ Other operating revenues during FY 2022 is comprised of \$0.8 million in late charges, \$3.6 million in support services and \$1 million in other miscellaneous minor transactions.

Power Sales and Revenues

Customer	FY 2022 ¹			FY 2021 ¹				
	Long-term (MWh)	Other (MWh)	Total energy (MWh)	Long-term (\$)	Other (\$)	Total revenue (\$)	Energy (MWh)	Revenue (\$)
MUNICIPALITIES								
Arizona								
Mesa	21,462	0	21,462	1,093,550	0	1,093,550	26,590	1,170,572
Page Electric Utility	82,179	22,119	104,298	5,236,633	1,436,646	6,673,279	101,033	5,560,726
Safford ²	2,286	0	2,286	81,073	0	81,073	3,091	86,837
Thatcher ²	1,159	0	1,159	41,250	0	41,250	1,604	45,116
Arizona subtotal	107,086	22,119	129,205	6,452,506	1,436,646	7,889,152	132,318	6,863,251
Colorado								
Arkansas River Power Authority	5,752	8	5,760	210,101	392	210,493	7,837	220,998
Aspen	3,760	0	3,760	124,764	0	124,764	5,325	135,008
Center	3,467	0	3,467	125,108	0	125,108	4,815	133,058
Colorado Springs Utilities	104,361	483	104,844	4,005,051	13,372	4,018,423	144,058	4,225,972
Delta	4,200	0	4,200	144,332	0	144,332	5,687	152,450
Fleming	190	0	190	6,777	0	6,777	253	7,076
Fort Morgan	20,958	0	20,958	765,927	0	765,927	28,742	806,578
Glenwood Springs	4,141	0	4,141	135,023	0	135,023	5,690	144,480
Gunnison	14,664	0	14,664	525,034	0	525,034	20,249	557,190
Haxtun	1,320	0	1,320	48,491	0	48,491	1,778	50,677
Holyoke	4,288	0	4,288	156,638	0	156,638	5,866	165,025
Oak Creek	953	0	953	34,799	0	34,799	1,315	36,831
Platte River Power Authority	369,202	0	369,202	12,077,971	0	12,077,971	503,512	12,823,916
Wray	1,923	0	1,923	68,102	0	68,102	2,623	72,205

SALT LAKE CITY AREA/INTEGRATED PROJECTS

Power Sales and Revenues, continued

Customer	FY 2022 ¹						FY 2021 ¹	
	Long-term (MWh)	Other (MWh)	Total energy (MWh)	Long-term (\$)	Other (\$)	Total revenue (\$)	Energy (MWh)	Revenue (\$)
Yuma	3,135	0	3,135	114,185	0	114,185	4,279	120,180
Colorado subtotal	542,314	491	542,805	18,542,303	13,764	18,556,067	742,029	19,651,644
New Mexico								
Aztec	9,767	0	9,767	422,036	0	422,036	11,839	448,605
Farmington	66,530	176,475	243,005	2,435,381	15,255,499	17,690,880	258,398	14,512,557
Gallup	20,988	64	21,052	712,337	5,038	717,375	24,524	861,001
Los Alamos County	4,221	127,602	131,823	147,159	9,796,344	9,943,503	170,348	9,458,425
Raton Public Service Company	5,285	0	5,285	204,005	0	204,005	5,206	132,984
Truth Or Consequences	15,516	0	15,516	550,864	0	550,864	21,086	580,148
New Mexico subtotal	122,307	304,141	426,448	4,471,782	25,056,881	29,528,663	491,401	25,993,720
Utah								
Heber Light and Power	50,238	0	50,238	1,754,529	0	1,754,529	49,061	1,271,135
Helper Municipal Corp	1,075	76	1,151	35,410	3,754	39,164	1,498	38,135
Murray City Power	78,062	0	78,062	3,046,249	0	3,046,249	130,509	4,805,810
St. George	122,056	104	122,160	5,892,524	6,626	5,899,150	131,355	4,319,563
Utah Associated Municipal Power Systems ³	518,471	424	518,895	27,295,661	18,577	27,314,238	588,906	22,389,887
Utah Municipal Power Agency	222,980	1,338	224,318	8,838,150	25,066	8,863,216	291,550	8,610,110
Utah subtotal	992,882	1,942	994,824	46,862,523	54,023	46,916,546	1,192,879	41,434,640
Wyoming								
Torrington	3,898	0	3,898	140,993	0	140,993	5,211	146,805
Wyoming Municipal Power Agency	14,429	16	14,445	514,375	1,995	516,370	19,542	541,801
Wyoming subtotal	18,327	16	18,343	655,368	1,995	657,363	24,753	688,606
Municipalities subtotal	1,782,916	328,709	2,111,625	76,984,482	26,563,309	103,547,791	2,583,380	94,631,861
COOPERATIVES								
Arizona								
Aggregated Energy Services	0	160	160	0	9,280	9,280	29	928
Arizona Electric Power Cooperative	19,612	20	19,632	682,280	10,000	692,280	25,360	699,209
Navopache Electric	17,546	0	17,546	649,356	0	649,356	24,638	689,010
Resource Management Services	0	821	821	0	47,390	47,390	71	2,340
Arizona subtotal	37,158	1,001	38,159	1,331,636	66,670	1,398,306	50,098	1,391,487
Colorado								
Basin Electric Power Cooperative	0	328	328	0	20,448	20,448	9,869	989,828
Grand Valley Rural Power Lines	5,642	0	5,642	206,263	0	206,263	7,210	201,050
Holy Cross Energy	29,500	0	29,500	1,047,527	0	1,047,527	38,469	1,003,308
CORE Electric Cooperative ⁴	34,480	0	34,480	1,180,914	0	1,180,914	46,236	1,218,671
Tri-State Generation and Transmission Association	1,050,023	793	1,050,816	37,696,778	17,286	37,714,064	1,429,530	40,099,324
Yampa Valley Electric Association	17,492	0	17,492	626,330	0	626,330	23,119	637,495
Colorado subtotal	1,137,137	1,121	1,138,258	40,757,812	37,734	40,795,546	1,554,433	44,149,676
New Mexico								
Central Valley Electric Cooperative	11,482	0	11,482	289,535	0	289,535	11,713	287,939
Farmers Electric Cooperative	9,962	0	9,962	249,569	0	249,569	9,132	237,778

SALT LAKE CITY AREA/INTEGRATED PROJECTS

Power Sales and Revenues, continued

Customer	FY 2022 ¹						FY 2021 ¹	
	Long-term (MWh)	Other (MWh)	Total energy (MWh)	Long-term (\$)	Other (\$)	Total revenue (\$)	Energy (MWh)	Revenue (\$)
Lea County Electric Cooperative	11,633	0	11,633	268,824	0	268,824	11,594	265,275
Roosevelt County Electric Cooperative	10,912	0	10,912	272,855	0	272,855	10,396	264,590
New Mexico subtotal	43,989	0	43,989	1,080,783	0	1,080,783	42,835	1,055,582
Utah								
Deseret Generation and Transmission Cooperative ⁵	380,597	452	381,049	18,996,437	23,580	19,020,017	463,294	14,769,004
Utah subtotal	380,597	452	381,049	18,996,437	23,580	19,020,017	463,294	14,769,004
Wyoming								
Willwood Light and Power Company	108	0	108	3,914	0	3,914	150	4,125
Wyoming subtotal	108	0	108	3,914	0	3,914	150	4,125
Cooperatives subtotal	1,598,989	2,574	1,601,563	62,170,582	127,984	62,298,566	2,110,810	61,369,874
FEDERAL AGENCIES								
Arizona								
Bureau of Indian Affairs - Colorado River Agency	2,215	128	2,343	81,134	7,561	88,695	2,427	66,235
Bureau of Indian Affairs - San Carlos Irrigation Project ²	4,173	0	4,173	150,554	0	150,554	22,476	1,580,535
Department of Defense - Yuma Proving Ground	3,181	0	3,181	188,692	0	188,692	3,114	126,198
Luke Air Force Base	13,989	0	13,989	837,067	253	837,320	12,968	577,759
Arizona subtotal	23,558	128	23,686	1,257,447	7,814	1,265,261	40,985	2,350,727
Colorado								
Pueblo Army Depot	6,096	0	6,096	233,221	0	233,221	8,173	242,177
Colorado subtotal	6,096	0	6,096	233,221	0	233,221	8,173	242,177
New Mexico								
Cannon Air Force Base	3,456	0	3,456	95,001	0	95,001	4,463	126,961
Department of Energy - National Nuclear Security Administration Service Center	56,964	0	56,964	2,071,792	0	2,071,792	69,971	1,848,502
Holloman Air Force Base	5,812	0	5,812	185,918	0	185,918	7,878	198,011
Kirtland Air Force Base	13,900	0	13,900	517,990	0	517,990	13,898	352,285
New Mexico subtotal	80,132	0	80,132	2,870,701	0	2,870,701	96,210	2,525,759
Utah								
Hill Air Force Base	12,083	611	12,694	415,698	30,053	445,751	17,569	594,603
Ogden Defense Depot	7,666	378	8,044	286,902	18,586	305,488	10,453	300,864
Tooele Army Base	1,888	103	1,991	52,518	5,048	57,566	2,585	57,286
Utah subtotal	21,637	1,092	22,729	755,118	53,687	808,805	30,607	952,753
Wyoming								
Warren Air Force Base	0	15,996	15,996	0	1,116,231	1,116,231	15,214	822,134
Wyoming Total	0	15,996	15,996	0	1,116,231	1,116,231	15,214	822,134
Federal agencies subtotal	131,423	17,216	148,639	5,116,487	1,177,732	6,294,219	191,189	6,893,550
STATE AGENCIES								
Arizona								
Salt River Project	198,124	695	198,819	6,934,838	17,710	6,952,548	264,549	7,257,014
Arizona subtotal	198,124	695	198,819	6,934,838	17,710	6,952,548	264,549	7,257,014
Nevada								
Colorado River Commission of Nevada	86,442	0	86,442	3,326,040	0	3,326,040	90,698	2,637,171
Nevada subtotal	86,442	0	86,442	3,326,040	0	3,326,040	90,698	2,637,171

SALT LAKE CITY AREA/INTEGRATED PROJECTS

Power Sales and Revenues, continued

Customer	FY 2022 ¹						FY 2021 ¹	
	Long-term (MWh)	Other (MWh)	Total energy (MWh)	Long-term (\$)	Other (\$)	Total revenue (\$)	Energy (MWh)	Revenue (\$)
Utah								
University Of Utah	9,584	519	10,103	306,073	25,470	331,543	13,001	326,324
Utah State University	3,328	0	3,328	106,253	0	106,253	4,519	113,232
Utah subtotal	12,912	519	13,431	412,326	25,470	437,796	17,520	439,556
State agencies subtotal	297,478	1,214	298,692	10,673,204	43,180	10,716,384	372,767	10,333,741
IRRIGATION DISTRICTS								
Arizona								
Chandler Heights Citrus Irrigation District ²	397	0	397	14,406	0	14,406	858	27,016
Electrical District No. 2, Pinal County ²	27,006	0	27,006	1,255,638	0	1,255,638	29,575	809,463
Electrical District No. 3, Pinal County ²	15,066	0	15,066	534,053	0	534,053	20,660	593,270
Electrical District No. 4, Pinal County ²	17,274	0	17,274	623,694	0	623,694	24,468	687,919
Electrical District No. 6, Pinal County ²	8,046	0	8,046	278,045	0	278,045	1,476	39,438
Electrical District No. 7, Maricopa County ²	7,733	0	7,733	286,918	0	286,918	15,448	472,061
Maricopa County Municipal Water Conservation District No. 1 ²	10,830	0	10,830	392,039	0	392,039	22,921	718,672
Ocotillo Water Conservation District ²	1,841	0	1,841	66,658	0	66,658	2,226	71,902
Queen Creek Irrigation District ²	0	0	0	0	0	0	0	0
Roosevelt Irrigation District ²	12,226	0	12,226	481,524	0	481,524	20,563	646,931
Roosevelt Water Conservation District ²	0	0	0	0	0	0	0	0
San Tan Irrigation District ²	7,697	0	7,697	309,252	0	309,252	3,846	166,208
Wellton-Mohawk Irrigation and Drainage District ²	2,538	0	2,538	141,638	0	141,638	2,068	83,974
Arizona subtotal	110,654	0	110,654	4,383,865	0	4,383,865	144,109	4,316,854
Utah								
Uintah Water Conservancy District	1,825	0	1,825	64,662	0	64,662	2,126	59,563
Weber Basin Water Conservancy District ⁶	28,442	0	28,442	2,142,576	0	2,142,576	0	265,708
Utah subtotal	30,267	0	30,267	2,207,238	0	2,207,238	2,126	325,271
Irrigation districts subtotal	140,921	0	140,921	6,591,103	0	6,591,103	146,235	4,642,125
NATIVE AMERICAN TRIBES								
Arizona								
Aha Macav Power Service	1,025	0	1,025	38,923	0	38,923	1,026	27,843
Ak-Chin Indian Community ²	8,363	0	8,363	302,118	0	302,118	10,381	298,524
Cocopah Indian Tribe	3,186	0	3,186	111,621	0	111,621	4,312	117,355
Colorado River Indian Tribes	13,286	879	14,165	466,209	49,873	516,082	17,920	490,286
Fort McDowell Yavapai Nation	6,276	0	6,276	219,882	0	219,882	8,530	231,822
Gila River Indian Community Utility Authority ²	36,279	0	36,279	1,298,093	0	1,298,093	52,300	1,458,104
Havasupai Tribe	591	0	591	20,727	0	20,727	809	21,929
Hopi Tribe	7,510	0	7,510	263,080	0	263,080	10,224	277,672
Hualapai Nation	1,677	0	1,677	58,788	0	58,788	2,281	61,984
Navajo Tribal Utility Authority ²	332,475	2,197	334,672	15,559,148	178,930	15,738,078	405,374	15,403,051
Pascua Yaqui Tribe	3,205	0	3,205	112,305	0	112,305	4,332	117,963
Salt River Pima-Maricopa Indian Community	40,203	0	40,203	1,408,709	0	1,408,709	54,427	1,481,252
San Carlos Apache Tribe	10,796	0	10,796	378,126	0	378,126	14,645	398,212
Tohono O'odham Utility Authority	5,504	6	5,510	192,752	381	193,133	9,589	353,971
Tonto Apache Tribe	993	0	993	34,857	0	34,857	1,351	36,713

SALT LAKE CITY AREA/INTEGRATED PROJECTS

Power Sales and Revenues, continued

Customer	FY 2022 ¹						FY 2021 ¹	
	Long-term (MWh)	Other (MWh)	Total energy (MWh)	Long-term (\$)	Other (\$)	Total revenue (\$)	Energy (MWh)	Revenue (\$)
White Mountain Apache Tribe	16,028	297	16,325	562,311	26,089	588,400	21,872	617,424
Yavapai-Apache Nation	4,576	0	4,576	160,353	0	160,353	6,184	168,401
Yavapai-Prescott Indian Tribe	2,088	0	2,088	73,174	0	73,174	2,848	77,314
Arizona subtotal	494,061	3,379	497,440	21,261,176	255,273	21,516,449	628,405	21,639,820
Colorado								
Southern Ute Indian Tribe	3,120	0	3,120	109,306	0	109,306	4,250	115,394
Ute Mountain Ute Tribe	1,338	0	1,338	46,871	0	46,871	1,822	49,494
Colorado subtotal	4,458	0	4,458	156,177	0	156,177	6,072	164,888
Nevada								
Duckwater Shoshone Tribe	185	0	185	6,480	0	6,480	252	6,833
Ely Shoshone Tribe	279	0	279	9,802	0	9,802	385	10,428
Las Vegas Paiute Tribe	1,697	0	1,697	59,434	0	59,434	2,287	62,346
Yomba Shoshone Tribe	84	0	84	2,921	0	2,921	114	3,082
Nevada subtotal	2,245	0	2,245	78,637	0	78,637	3,038	82,689
New Mexico								
Alamo Navajo Chapter	515	0	515	18,083	0	18,083	703	19,094
Canoncito Navajo Chapter, To'Hajilee Navajo Chapter	378	0	378	13,318	0	13,318	518	14,064
Cochiti Pueblo	555	37	592	19,437	2,223	21,660	755	20,528
Jicarilla Apache Tribe	2,794	2	2,796	116,912	88	117,000	3,582	140,756
Kewa Pueblo - Pueblo of Santo Domingo	2,672	0	2,672	93,602	0	93,602	3,635	98,757
Mescalero Apache Tribe	168	0	168	5,897	0	5,897	229	6,231
Nambe Pueblo	1,209	72	1,281	42,379	4,423	46,802	1,635	44,583
Picuris Pueblo	135	0	135	4,717	0	4,717	178	4,881
Pueblo of Acoma	1,804	0	1,804	78,156	0	78,156	1,523	41,561
Pueblo of Isleta	2,996	185	3,181	105,041	11,151	116,192	4,056	110,582
Pueblo of Jemez	649	0	649	22,753	0	22,753	888	24,088
Pueblo of Laguna	2,034	0	2,034	71,185	0	71,185	2,765	75,108
Pueblo of Pojoaque	651	0	651	22,751	0	22,751	890	24,109
Pueblo of San Felipe	1,016	68	1,084	35,597	4,157	39,754	1,383	37,628
Pueblo of San Juan	815	0	815	28,626	0	28,626	1,113	30,206
Pueblo of Sandia	2,392	138	2,530	83,897	8,333	92,230	3,226	88,087
Pueblo of Santa Ana	1,181	68	1,249	41,461	4,171	45,632	1,596	43,554
Pueblo of Santa Clara	649	0	649	22,720	0	22,720	888	24,055
Pueblo of Taos	759	0	759	26,602	0	26,602	1,045	28,268
Pueblo of Tesuque	1,666	99	1,765	58,387	6,047	64,434	2,251	61,405
Pueblo of Zia	206	0	206	7,271	0	7,271	284	7,699
Pueblo of Zuni	2,994	0	2,994	104,844	0	104,844	4,087	110,882
Ramah Navajo Chapter	965	0	965	33,791	0	33,791	1,323	35,838
San Ildefonso Pueblo	174	0	174	6,047	0	6,047	235	6,381
New Mexico subtotal	29,377	669	30,046	1,063,474	40,593	1,104,067	38,788	1,098,345

SALT LAKE CITY AREA/INTEGRATED PROJECTS

Power Sales and Revenues, continued

Customer	FY 2022 ¹						FY 2021 ¹	
	Long-term (MWh)	Other (MWh)	Total energy (MWh)	Long-term (\$)	Other (\$)	Total revenue (\$)	Energy (MWh)	Revenue (\$)
Utah								
Confederated Tribes of the Goshute Reservation	137	0	137	4,793	0	4,793	189	5,097
Paiute Indian Tribe of Utah	424	0	424	14,868	0	14,868	577	15,678
Ute Indian Tribe of the Uintah and Ouray Reservation	1,551	157	1,708	54,279	8,865	63,144	2,131	57,809
Utah subtotal	2,112	157	2,269	73,940	8,865	82,805	2,897	78,584
Wyoming								
Wind River Reservation	1,326	0	1,326	46,432	0	46,432	1,804	48,992
Wyoming subtotal	1,326	0	1,326	46,432	0	46,432	1,804	48,992
Native American tribes subtotal	533,579	4,205	537,784	22,679,836	304,731	22,984,567	681,004	23,113,318
INVESTOR-OWNED UTILITIES								
Arizona								
CNF Technologies	0	1,368	1,368	0	150,915	150,915	0	0
Tucson Electric Power Company	0	140	140	0	6,700	6,700	715	45,045
UNS Electric	0	0	0	0	0	0	60	2,280
Arizona subtotal	0	1,508	1,508	0	157,615	157,615	775	47,325
Colorado								
Black Hills Energy	0	262	262	0	12,835	12,835	125	1,881
Guzman Energy	0	0	0	0	0	0	28	1,105
Public Service Company of Colorado	0	208	208	0	9,740	9,740	0	0
Colorado subtotal	0	470	470	0	22,575	22,575	153	2,986
New Mexico								
Public Service Company of New Mexico	0	0	0	0	0	0	127	5,111
New Mexico subtotal	0	0	0	0	0	0	127	5,111
Utah								
PacifiCorp	0	248	248	0	39,219	39,219	58	2,910
Utah subtotal	0	248	248	0	39,219	39,219	58	2,910
Investor-owned utilities subtotal	0	2,226	2,226	0	219,409	219,409	1,113	58,332
POWER MARKETERS								
Arizona								
Dynasty Power	0	105	105	0	7,140	7,140	0	0
Arizona subtotal	0	105	105	0	7,140	7,140	0	0
Colorado								
Macquarie Energy	0	0	0	0	0	0	227	27,072
Powerex	0	572	572	0	18,300	18,300	150	41,250
Rainbow Energy Marketing Corporation	0	50	50	0	6,250	6,250	1,769	32,104
Colorado subtotal	0	622	622	0	24,550	24,550	2,146	100,426
Utah								
Morgan Stanley Capital Group	0	0	0	0	0	0	176	5,770
Utah subtotal	0	0	0	0	0	0	176	5,770
Wyoming								
TransAlta Energy Marketing	0	287	287	0	77,870	77,870	0	0
Wyoming subtotal	0	287	287	0	77,870	77,870	0	0
Power marketers subtotal	0	1,014	1,014	0	109,560	109,560	2,322	106,196

SALT LAKE CITY AREA/INTEGRATED PROJECTS

Power Sales and Revenues, continued

Customer	FY 2022 ¹						FY 2021 ¹	
	Long-term (MWh)	Other (MWh)	Total energy (MWh)	Long-term (\$)	Other (\$)	Total revenue (\$)	Energy (MWh)	Revenue (\$)
JOINT POWER AUTHORITIES								
Nevada								
Silver State Energy Association	0	720	720	0	46,720	46,720	32	1,240
Nevada subtotal	0	720	720	0	46,720	46,720	32	1,240
Joint power authorities subtotal	0	720	720	0	46,720	46,720	32	1,240
INDEPENDENT SYSTEM OPERATOR CORPORATIONS								
California								
California Independent System Operator Corporation ⁷	0	253	253	0	490,427	490,427	0	388,879
California subtotal	0	253	253	0	490,427	490,427	0	388,879
Independent system operator corporations subtotal	0	253	253	0	490,427	490,427	0	388,879
INTERPROJECT								
Arizona								
Colorado River Storage Project Management Center	0	420	420	0	49,691	49,691	413	54,147
Desert Southwest region	0	1,302	1,302	0	114,325	114,325	439	14,852
Arizona subtotal	0	1,722	1,722	0	164,016	164,016	852	68,999
Colorado								
Rocky Mountain region	0	7,799	7,799	0	530,190	530,190	7,757	339,731
Colorado subtotal	0	7,799	7,799	0	530,190	530,190	7,757	339,731
Interproject subtotal	0	9,521	9,521	0	694,206	694,206	8,609	408,730
PROJECT USE								
Colorado								
Colorado (3 customers)	13,462	44	13,506	362,155	3,060	365,215	13,024	317,776
Colorado subtotal	13,462	44	13,506	362,155	3,060	365,215	13,024	317,776
New Mexico								
New Mexico (1 customer)	71,759	0	71,759	1,827,908	0	1,827,908	83,463	1,926,955
New Mexico subtotal	71,759	0	71,759	1,827,908	0	1,827,908	83,463	1,926,955
Project-use subtotal	85,221	44	85,265	2,190,063	3,060	2,193,123	96,487	2,244,731
Salt Lake City Area/Integrated Projects total	4,570,527	367,696	4,938,223	186,405,757	29,780,318	216,186,075	6,193,948	204,192,577

¹ Power revenues as presented in this table are \$729,000 and \$520,000 greater than the FY 2022 and FY 2021 sales of electric power revenues presented in the Statements of Revenues and Expenses, and Accumulated Net Revenues due to variances between revenue accrual estimates and actual revenue along with other miscellaneous minor transactions.

² Salt Lake City Area/Integrated Projects power and energy may be redistributed among certain customers to achieve greater efficiencies in using SLCA/IP resources for these customers. Because of this redistribution, power sales for a particular customer may show redistributions of that customer's SLCA/IP allocation of firm power and other power purchases.

³ Utah Associated Municipal Power System total is comprised of the SLCA/IP allocations of its members.

⁴ Formerly known as Intermountain Rural Electric Association.

⁵ Deseret Generation and Transmission total is comprised of the SLCA/IP allocations of its members.

⁶ Energy of 2,823 MWh was not reported in FY 2021.

⁷ FY 2021 settlements revenues with no associated energy from FY 2020 services provided to California Independent System Operator Corporation.

COLLBRAN PROJECT
Status of Repayment

	Cumulative 2021 ¹ (\$)	Adjustments (\$)	Annual 2022 ² (\$)	Cumulative 2022 (\$)
REVENUE:				
Gross Operating Revenue	78,020,259	0	1,418,203	79,438,462
Income transfers (net)	35,916	500,000	0	535,916
Total operating revenue	78,056,175	500,000	1,418,203	79,974,378
EXPENSES:				
O&M and other	41,384,547	0	1,710,554	43,095,101
Purchase power and other	0	0	0	0
Interest				
Federally financed	12,992,436	0	120,783	13,113,219
Non-federally financed	0	0	0	0
Total interest	12,992,436	0	120,783	13,113,219
Total expense	54,376,983	0	1,831,337	56,208,320
(Deficit)/surplus revenue	0	500,000	(500,001)	(1)
INVESTMENT:				
Federally financed power	22,645,339	0	12,987	22,658,326
Non-federally financed power	0	0	0	0
Nonpower	5,059,020	0	0	5,059,020
Non-federally financed power	0	0	0	0
Total investment	27,704,359	0	12,987	27,717,346
INVESTMENT REPAID:				
Federally financed power	18,620,172	0	86,867	18,707,039
Non-federally financed power	0	0	0	0
Nonpower	5,059,020	0	0	5,059,020
Non-federally financed power	0	0	0	0
Total investment repaid	23,679,192	0	86,867	23,766,059
INVESTMENT UNPAID:				
Federally financed power	4,025,167	0	(73,880)	3,951,287
Non-federally financed power	0	0	0	0
Nonpower	0	0	0	0
Non-federally financed power	0	0	0	0
Total investment unpaid	4,025,167	0	(73,880)	3,951,287
PERCENT OF INVESTMENT REPAID TO DATE:				
Federal	82.23%			82.56%
Non-federal	N/A			N/A
Nonpower	100.00%			100.00%

¹This column ties to the cumulative numbers on page 137 of the FY 2021 Statistical Appendix.
²Based on FY 2022 unaudited financial statements.

COLORADO RIVER STORAGE PROJECT
Status of Repayment

	Cumulative 2021 ¹ (\$)	Adjustments (\$)	Annual 2022 ² (\$)	Cumulative 2022 (\$)
REVENUE:				
Gross operating revenue	7,033,272,908	0	252,688,015	7,285,960,923
Income transfers (net) ³	(46,430,449)	40,100,000	(42,848,504)	(49,178,953)
Total operating revenue	6,986,842,459	40,100,000	209,839,511	7,236,781,970
EXPENSES:				
O&M and other ⁴	2,515,953,321	(1,034,474)	92,309,075	2,607,227,922
Purchase power and wheeling	2,120,833,659	0	129,460,833	2,250,294,492
Interest				
Federally financed	805,051,923	0	8,905,675	813,957,598
Non-federally financed	9,052,372	0	490,095	9,542,467
Total interest	814,104,295	0	9,395,770	823,500,065
Total expense	5,450,891,275	(1,034,474)	231,165,678	5,681,022,479
(Deficit)/surplus revenue	3	41,134,474	(41,134,475)	2
INVESTMENT:				
Federally financed power ⁵	1,449,487,184	975,436	53,977,255	1,504,439,875
Non-federally financed power	0	0	0	0
Nonpower ⁶	908,215,711	(10,111,326)	0	898,104,385
Non-federally financed power	0	0	0	0
Total investment	2,357,702,895	(9,135,890)	53,977,255	2,402,544,260
INVESTMENT REPAID:				
Federally financed power	1,286,264,929	0	19,808,308	1,306,073,237
Non-federally financed power	0	0	0	0
Nonpower	249,686,252	0	0	249,686,252
Non-federally financed power	0	0	0	0
Total investment repaid	1,535,951,181	0	19,808,308	1,555,759,489
INVESTMENT UNPAID:				
Federally financed power	163,222,255	975,436	34,168,947	198,366,638
Non-federally financed power	0	0	0	0
Nonpower	658,529,459	(10,111,326)	0	648,418,133
Non-federally financed power	0	0	0	0
Total investment unpaid	821,751,714	(9,135,890)	34,168,947	846,784,771
PERCENT OF INVESTMENT REPAID TO DATE:				
Federal	88.74%			86.81%
Non-federal	N/A			N/A
Nonpower	27.49%			27.80%

¹This column ties to the cumulative numbers on page 137 of the FY 2021 Statistical Appendix.
²Based on FY 2022 unaudited financial statements.
³Revenue transfers to SLCA/IP Projects.
⁴Gains and losses for FY 2022 (CRSP losses on disposition of assets) /unexpended MOA Revenue.
⁵Network credit adjustment.
⁶Allocated costs to participating projects.

DOLORES PROJECT
Status of Repayment

	Cumulative 2021 ¹ (\$)	Adjustments (\$)	Annual 2022 ² (\$)	Cumulative 2022 (\$)
REVENUE:				
Gross Operating Revenue	103,815,566	0	15	103,815,581
Income transfers (net) ³	1,686,771	(39,900,000)	40,527,000	2,313,771
Total operating revenue	105,502,337	(39,900,000)	40,527,015	106,129,352
EXPENSES:				
O&M and other ⁴	18,234,159	0	539,550	18,773,709
Purchase power and other	0	0	0	0
Interest				
Federally financed ⁵	48,815,106	(14,194)	55,527	48,856,439
Non-federally financed	0	0	0	0
Total interest	48,815,106	(14,194)	55,527	48,856,439
Total expense	67,049,265	(14,194)	595,077	67,630,148
(Deficit)/surplus revenue	(1)	(39,885,806)	39,885,806	(1)
INVESTMENT:				
Federally financed power	39,445,409	0	0	39,445,409
Non-federally financed power	0	0	0	0
Nonpower	0	0	0	0
Non-federally financed power	0	0	0	0
Total investment	39,445,409	0	0	39,445,409
INVESTMENT REPAYED:				
Federally financed power	38,453,073	0	46,132	38,499,205
Non-federally financed power	0	0	0	0
Nonpower	0	0	0	0
Non-federally financed power	0	0	0	0
Total investment repaid	38,453,073	0	46,132	38,499,205
INVESTMENT UNPAID:				
Federally financed power	992,336	0	(46,132)	946,204
Non-federally financed power	0	0	0	0
Nonpower	0	0	0	0
Non-federally financed power	0	0	0	0
Total Investment unpaid	992,336	0	(46,132)	946,204
PERCENT OF INVESTMENT REPAYED TO DATE:				
Federal	97.48%			97.60%
Non-federal	N/A			N/A
Nonpower	N/A			N/A

¹This column ties to the cumulative numbers on page 138 of the FY 2021 Statistical Appendix.

²Based on FY 2022 unaudited financial statements.

³Revenue transfer from Dolores to CRSP.

⁴Gains and losses.

⁵Interest adjustment

RIO GRANDE PROJECT
Status of Repayment

	Cumulative 2021 ¹ (\$)	Adjustments (\$)	Annual 2022 ² (\$)	Cumulative 2022 (\$)
REVENUE:				
Gross operating revenue	135,659,694	0	2,951,595	138,611,289
Income transfers (net) ³	(61,974)	800,000	0	738,026
Total operating revenue	135,597,720	800,000	2,951,595	139,349,315
EXPENSES:				
O&M and other	90,506,060	0	3,501,730	94,007,790
Purchase power and other	4,774,405	0	0	4,774,405
Interest				
Federally financed	15,521,751	0	163,546	15,685,297
Non-federally financed	0	0	0	0
Total interest	15,521,751	0	163,546	15,685,297
Total expense	110,802,216	0	3,665,276	114,467,492
(Deficit)/surplus revenue	(1)	800,000	(800,000)	(1)
INVESTMENT:				
Federally financed power	24,444,218	0	624,936	25,069,154
Non-federally financed power	0	0	0	0
Nonpower	5,801,911	0	0	5,801,911
Non-federally financed power	0	0	0	0
Total investment	30,246,129	0	624,936	30,871,065
INVESTMENT REPAYED:				
Federally financed power	18,993,594	0	86,319	19,079,913
Non-federally financed power	0	0	0	0
Nonpower	5,801,911	0	0	5,801,911
Non-federally financed power	0	0	0	0
Total investment repaid	24,795,505	0	86,319	24,881,824
INVESTMENT UNPAID:				
Federally financed power	5,450,624	0	538,617	5,989,241
Non-federally financed power	0	0	0	0
Nonpower	0	0	0	0
Non-federally financed power	0	0	0	0
Total investment unpaid	5,450,624	0	538,617	5,989,241
PERCENT OF INVESTMENT REPAYED TO DATE:				
Federal	77.70%			76.11%
Non-federal	N/A			N/A
Nonpower	100.00%			100.00%

¹This column ties to the cumulative numbers on page 138 of the FY 2021 Statistical Appendix.

²Based on FY 2022 unaudited financial statements.

³Revenue transfer from CRSP to Rio Grande.

SALT LAKE CITY AREA/INTEGRATED PROJECTS

SEEDSKADEE PROJECT

Status of Repayment

	Cumulative 2021 ¹ (\$)	Adjustments (\$)	Annual 2022 ² (\$)	Cumulative 2022 (\$)
REVENUE:				
Gross operating revenue	24,204,656	0	61,595	24,266,251
Income transfers (net) ³	19,624,287	0	2,321,000	21,945,287
Total operating revenue	43,828,943	0	2,382,595	46,211,538
EXPENSES:				
O&M and other	24,045,676	0	857,381	24,903,057
Purchase power and other	0	0	0	0
Interest				
Federally financed	6,782,447	0	(46,219)	6,736,228
Non-federally financed	0	0	0	0
Total interest	6,782,447	0	(46,219)	6,736,228
Total expense	30,828,123	0	811,162	31,639,285
(Deficit)/surplus revenue	0	0	1,527,129	1,527,129
INVESTMENT:				
Federally financed power	13,000,821	0	44,301	13,045,122
Non-federally financed power	0	0	0	0
Nonpower	0	0	0	0
Non-federally financed power	0	0	0	0
Total investment	13,000,821	0	44,301	13,045,122
INVESTMENT REPAID:				
Federally financed power	13,000,820	0	44,304	13,045,124
Non-federally financed power	0	0	0	0
Nonpower	0	0	0	0
Non-federally financed power	0	0	0	0
Total investment repaid	13,000,820	0	44,304	13,045,124
INVESTMENT UNPAID:				
Federally financed power	1	0	(3)	(2)
Non-federally financed power	0	0	0	0
Nonpower	0	0	0	0
Non-federally financed power	0	0	0	0
Total investment unpaid	1	0	(3)	(2)
PERCENT OF INVESTMENT REPAID TO DATE:				
Federal	100.00%			100.00%
Non-federal	N/A			N/A
Nonpower	N/A			N/A

¹ This column ties to the cumulative numbers on page 139 of the FY 2021 Statistical Appendix.

² Based on FY 2022 unaudited financial statements.

³ Revenue transfers from CRSP.

Balance Sheets

As of Sept. 30, 2022 and 2021 (in thousands)

	FY 2022			FY 2021		
	WAPA	Reclamation	Total	WAPA	Reclamation	Total
Assets:						
Completed utility plant	\$998	\$16,266	\$17,264	\$998	\$16,253	\$17,251
Accumulated depreciation	(547)	(8,026)	(8,573)	(530)	(7,867)	(8,397)
Net completed plant	451	8,240	8,691	468	8,386	8,854
Construction work-in-progress	561	127	688	538	40	578
Net utility plant	1,012	8,367	9,379	1,006	8,426	9,432
Cash	232	561	793	162	342	504
Accounts receivable, net	0	0	0	0	0	0
Regulatory assets	6	77	83	6	88	94
Other assets	0	0	0	0	0	0
Total assets	1,250	9,005	10,255	1,174	8,856	10,030
Liabilities:						
Long-term liabilities	0	0	0	0	0	0
Customer advances and other liabilities	1	84	85	1	98	99
Deferred revenue	0	0	0	0	0	0
Accounts payable	0	73	73	0	32	32
Environmental cleanup liabilities	5	26	31	5	26	31
Total liabilities	6	183	189	6	156	162
Capitalization:						
Congressional appropriations	2,622	59,813	62,435	2,615	57,987	60,602
Interest on Federal investment	361	13,024	13,385	344	12,904	13,248
Transfer of property and services, net	68,380	(65,817)	2,563	66,982	(64,530)	2,452
Payments to U.S. Treasury	(70,484)	(2,073)	(72,557)	(69,240)	(2,022)	(71,262)
Payable to U.S. Treasury	879	4,947	5,826	701	4,339	5,040
Accumulated net revenues (deficit)	365	3,875	4,240	467	4,361	4,828
Total capitalization	1,244	8,822	10,066	1,168	8,700	9,868
Total liabilities and capitalization	\$1,250	\$9,005	\$10,255	\$1,174	\$8,856	\$10,030

Statements of Revenues and Expenses, and Accumulated Net Revenues

For the years ended Sept. 30, 2022 and 2021 (in thousands)

	FY 2022			FY 2021		
	WAPA	Reclamation	Total	WAPA	Reclamation	Total
Operating revenues:						
Sales of electric power	\$1,367	\$0	\$1,367	\$1,917	\$0	\$1,917
Transmission and other operating revenues	0	51	51	0	51	51
Gross operating revenues	1,367	51	1,418	1,917	51	1,968
Income transfers, net	(1,287)	1,287	0	(1,852)	1,852	0
Total operating revenues	80	1,338	1,418	65	1,903	1,968
Operating expenses:						
Operation and maintenance	151	1,545	1,696	40	1,470	1,510
Purchased power	0	0	0	0	0	0
Purchased transmission services	0	0	0	0	0	0
Depreciation	17	159	176	17	154	171
Administration and general	13	0	13	17	0	17
Total operating expenses	181	1,704	1,885	74	1,624	1,698
Net operating revenues (deficit)	(101)	(366)	(467)	(9)	279	270
Interest expenses:						
Interest on payable to U.S. Treasury	17	120	137	16	120	136
Allowance for funds used during construction	(16)	0	(16)	(8)	(1)	(9)
Net interest on payable to U.S. Treasury	1	120	121	8	119	127
Interest on long-term liabilities	0	0	0	0	0	0
Net interest expenses	1	120	121	8	119	127
Net revenues (deficit)	(102)	(486)	(588)	(17)	160	143
Accumulated net revenues (deficit):						
Balance, beginning of year	467	4,361	4,828	484	4,201	4,685
Irrigation assistance	0	0	0	0	0	0
Change in capitalization	0	0	0	0	0	0
Balance, end of year	\$365	\$3,875	\$4,240	\$467	\$4,361	\$4,828

Balance Sheets

As of Sept. 30, 2022 and 2021 (in thousands)

	FY 2022			FY 2021		
	WAPA	Reclamation	Total	WAPA	Reclamation	Total
Assets:						
Completed utility plant	\$764,705	\$657,589	\$1,422,294	\$736,834	\$634,564	\$1,371,398
Accumulated depreciation	(504,419)	(399,286)	(903,705)	(491,098)	(393,626)	(884,724)
Net completed plant	260,286	258,303	518,589	245,736	240,938	486,674
Construction work-in-progress	11,912	35,903	47,815	25,696	55,275	80,971
Net utility plant	272,198	294,206	566,404	271,432	296,213	567,645
Cash	217,279	94,956	312,235	117,488	93,221	210,709
Accounts receivable, net	39,268	225	39,493	31,355	170	31,525
Regulatory assets	17,469	4,979	22,448	18,183	4,718	22,901
Other assets	10,240	0	10,240	10,697	0	10,697
Total assets	556,454	394,366	950,820	449,155	394,322	843,477
Liabilities:						
Long-term liabilities	12,376	0	12,376	14,029	0	14,029
Customer advances and other liabilities	4,790	5,765	10,555	5,407	5,325	10,732
Deferred revenue	0	0	0	0	0	0
Accounts payable	31,696	2,205	33,901	19,220	2,956	22,176
Environmental cleanup liabilities	3,301	482	3,783	3,131	482	3,613
Total liabilities	52,163	8,452	60,615	41,787	8,763	50,550
Capitalization:						
Congressional appropriations	808,117	281,013	1,089,130	722,073	279,865	1,001,938
Interest on federal investment	567,007	476,113	1,043,120	559,907	470,356	1,030,263
Transfer of property and services, net	451,769	(698,079)	(246,310)	474,695	(723,058)	(248,363)
Payments to U.S. Treasury	(1,457,249)	0	(1,457,249)	(1,495,312)	0	(1,495,312)
Payable to U.S. Treasury	369,644	59,047	428,691	261,363	27,163	288,526
Accumulated net revenues (deficit)	134,647	326,867	461,514	146,005	358,396	504,401
Total capitalization	504,291	385,914	890,205	407,368	385,559	792,927
Total liabilities and capitalization	\$556,454	\$394,366	\$950,820	\$449,155	\$394,322	\$843,477

Statements of Revenues and Expenses, and Accumulated Net Revenues

For the years ended Sept. 30, 2022 and 2021 (in thousands)

	FY 2022			FY 2021		
	WAPA	Reclamation	Total	WAPA	Reclamation	Total
Operating revenues:						
Sales of electric power	\$211,138	\$0	\$211,138	\$195,027	\$0	\$195,027
Transmission and other operating revenues	38,408	3,142	41,550	38,373	3,280	41,653
Gross operating revenues	249,546	3,142	252,688	233,400	3,280	236,680
Income transfers, net	(39,882)	(2,967)	(42,849)	(10,960)	37,219	26,259
Total operating revenues	209,664	175	209,839	222,440	40,499	262,939
Operating expenses:						
Operation and maintenance	59,214	19,561	78,775	51,451	32,454	83,905
Purchased power	104,378	0	104,378	101,005	0	101,005
Purchased transmission services	25,083	0	25,083	25,596	0	25,596
Depreciation	13,569	8,622	22,191	14,502	(3,607)	10,895
Administration and general	13,533	0	13,533	13,377	0	13,377
Total operating expenses	215,777	28,183	243,960	205,931	28,847	234,778
Net operating revenues (deficit)	(6,113)	(28,008)	(34,121)	16,509	11,652	28,161
Interest expenses:						
Interest on payable to U.S. Treasury	7,100	5,757	12,857	4,548	4,387	8,935
Allowance for funds used during construction	(1,715)	(2,236)	(3,951)	(941)	(2,633)	(3,574)
Net interest on payable to U.S. Treasury	5,385	3,521	8,906	3,607	1,754	5,361
Interest on long-term liabilities	490	0	490	505	0	505
Net interest expenses	5,875	3,521	9,396	4,112	1,754	5,866
Net revenues (deficit)	(11,988)	(31,529)	(43,517)	12,397	9,898	22,295
Accumulated net revenues (deficit):						
Balance, beginning of year	146,005	358,396	504,401	151,453	348,498	499,951
Irrigation assistance	630	0	630	(17,845)	0	(17,845)
Change in capitalization	0	0	0	0	0	0
Balance, end of year	\$134,647	\$326,867	\$461,514	\$146,005	\$358,396	\$504,401

Balance Sheets

As of Sept. 30, 2022 and 2021 (in thousands)

	FY 2022			FY 2021		
	WAPA	Reclamation	Total	WAPA	Reclamation	Total
Assets:						
Completed utility plant	\$9,725	\$29,115	\$38,840	\$9,725	\$29,115	\$38,840
Accumulated depreciation	(5,659)	(11,323)	(16,982)	(5,414)	(10,928)	(16,342)
Net completed plant	4,066	17,792	21,858	4,311	18,187	22,498
Construction work-in-progress	212	0	212	20	0	20
Net utility plant	4,278	17,792	22,070	4,331	18,187	22,518
Cash	7,888	116	8,004	8,379	0	8,379
Accounts receivable, net	0	0	0	0	0	0
Regulatory assets	29	1	30	28	1	29
Other assets	0	90	90	0	419	419
Total assets	12,195	17,999	30,194	12,738	18,607	31,345
Liabilities:						
Long-term liabilities	0	0	0	0	0	0
Customer advances and other liabilities	1	1	2	6	0	6
Deferred revenue	0	0	0	0	0	0
Accounts payable	0	1	1	0	2	2
Environmental cleanup liabilities	29	0	29	27	0	27
Total liabilities	30	2	32	33	2	35
Capitalization:						
Congressional appropriations	26,999	25,015	52,014	27,438	25,014	52,452
Interest on Federal investment	9,186	48,966	58,152	9,242	48,851	58,093
Transfer of property and services, net	46,292	(73,587)	(27,295)	46,311	(74,045)	(27,734)
Payments to U.S. Treasury	(73,040)	0	(73,040)	(32,540)	0	(32,540)
Payable to U.S. Treasury	9,437	394	9,831	50,451	(180)	50,271
Accumulated net revenues (deficit)	2,728	17,603	20,331	(37,746)	18,785	(18,961)
Total capitalization	12,165	17,997	30,162	12,705	18,605	31,310
Total liabilities and capitalization	\$12,195	\$17,999	\$30,194	\$12,738	\$18,607	\$31,345

Statements of Revenues and Expenses, and Accumulated Net Revenues

For the years ended Sept. 30, 2022 and 2021 (in thousands)

	FY 2022			FY 2021		
	WAPA	Reclamation	Total	WAPA	Reclamation	Total
Operating revenues:						
Sales of electric power	\$0	\$0	\$0	\$616	\$0	\$616
Transmission and other operating revenues	0	0	0	0	0	0
Gross operating revenues	0	0	0	616	0	616
Income transfers, net	40,840	(313)	40,527	(25,840)	(655)	(26,495)
Total operating revenues	40,840	(313)	40,527	(25,224)	(655)	(25,879)
Operating expenses:						
Operation and maintenance	161	359	520	150	402	552
Purchased power	0	0	0	0	0	0
Purchased transmission services	0	0	0	0	0	0
Depreciation	245	395	640	245	395	640
Administration and general	20	0	20	37	0	37
Total operating expenses	426	754	1,180	432	797	1,229
Net operating revenues (deficit)	40,414	(1,067)	39,347	(25,656)	(1,452)	(27,108)
Interest expenses:						
Interest on payable to U.S. Treasury	(56)	115	59	41	(30)	11
Allowance for funds used during construction	(4)	0	(4)	3	0	3
Net interest on payable to U.S. Treasury	(60)	115	55	44	(30)	14
Interest on long-term liabilities	0	0	0	0	0	0
Net interest expenses	(60)	115	55	44	(30)	14
Net revenues (deficit)	40,474	(1,182)	39,292	(25,700)	(1,422)	(27,122)
Accumulated net revenues (deficit):						
Balance, beginning of year	(37,746)	18,785	(18,961)	(12,046)	20,207	8,161
Irrigation assistance	0	0	0	0	0	0
Change in capitalization	0	0	0	0	0	0
Balance, end of year	\$2,728	\$17,603	\$20,331	(\$37,746)	\$18,785	(\$18,961)

Balance Sheets

As of Sept. 30, 2022 and 2021 (in thousands)

	FY 2022			FY 2021		
	WAPA	Reclamation	Total	WAPA	Reclamation	Total
Assets:						
Completed utility plant	\$13	\$23,991	\$24,004	\$13	\$23,422	\$23,435
Accumulated depreciation	(12)	(13,888)	(13,900)	(12)	(13,759)	(13,771)
Net completed plant	1	10,103	10,104	1	9,663	9,664
Construction work-in-progress	0	1,619	1,619	0	1,898	1,898
Net utility plant	1	11,722	11,723	1	11,561	11,562
Cash	376	7,322	7,698	104	2,269	2,373
Accounts receivable, net	0	0	0	0	0	0
Regulatory assets	0	118	118	0	102	102
Other assets	0	0	0	0	0	0
Total assets	377	19,162	19,539	105	13,932	14,037
Liabilities:						
Long-term liabilities	0	0	0	0	0	0
Customer advances and other liabilities	1	93	94	2	148	150
Deferred revenue	0	0	0	0	0	0
Accounts payable	0	33	33	0	101	101
Environmental cleanup liabilities	0	58	58	0	0	0
Total liabilities	1	184	185	2	249	251
Capitalization:						
Congressional appropriations	1,809	130,251	132,060	1,808	121,404	123,212
Interest on Federal investment	279	17,068	17,347	279	16,892	17,171
Transfer of property and services, net	108,486	(109,334)	(848)	105,465	(106,423)	(958)
Payments to U.S. Treasury	(110,116)	(22,191)	(132,307)	(107,449)	(22,191)	(129,640)
Payable to U.S. Treasury	458	15,794	16,252	103	9,682	9,785
Accumulated net revenues (deficit)	(82)	3,184	3,102	0	4,001	4,001
Total capitalization	376	18,978	19,354	103	13,683	13,786
Total liabilities and capitalization	\$377	\$19,162	\$19,539	\$105	\$13,932	\$14,037

Statements of Revenues and Expenses, and Accumulated Net Revenues

For the years ended Sept. 30, 2022 and 2021 (in thousands)

	FY 2022			FY 2021		
	WAPA	Reclamation	Total	WAPA	Reclamation	Total
Operating revenues:						
Sales of electric power	\$2,952	\$0	\$2,952	\$6,113	\$0	\$6,113
Transmission and other operating revenues	0	0	0	0	0	0
Gross operating revenues	2,952	0	2,952	6,113	0	6,113
Income transfers, net	(2,912)	2,912	0	(6,104)	6,104	0
Total operating revenues	40	2,912	2,952	9	6,104	6,113
Operating expenses:						
Operation and maintenance	117	3,381	3,498	5	5,733	5,738
Purchased power	0	0	0	0	0	0
Purchased transmission services	0	0	0	0	0	0
Depreciation	0	185	185	0	153	153
Administration and general	5	0	5	4	0	4
Total operating expenses	122	3,566	3,688	9	5,886	5,895
Net operating revenues (deficit)	(82)	(654)	(736)	0	218	218
Interest expenses:						
Interest on payable to U.S. Treasury	0	176	176	0	153	153
Allowance for funds used during construction	0	(13)	(13)	0	(4)	(4)
Net interest on payable to U.S. Treasury	0	163	163	0	149	149
Interest on long-term liabilities	0	0	0	0	0	0
Net interest expenses	0	163	163	0	149	149
Net revenues (deficit)	(82)	(817)	(899)	0	69	69
Accumulated net revenues (deficit):						
Balance, beginning of year	0	4,001	4,001	0	3,932	3,932
Irrigation assistance	0	0	0	0	0	0
Change in capitalization	0	0	0	0	0	0
Balance, end of year	(\$82)	\$3,184	\$3,102	\$0	\$4,001	\$4,001

Balance Sheets

As of Sept. 30, 2022 and 2021 (in thousands)

	FY 2022			FY 2021		
	WAPA	Reclamation	Total	WAPA	Reclamation	Total
Assets:						
Completed utility plant	\$1,952	\$10,674	\$12,626	\$1,952	\$10,630	\$12,582
Accumulated depreciation	(1,269)	(4,490)	(5,759)	(1,199)	(4,321)	(5,520)
Net completed plant	683	6,184	6,867	753	6,309	7,062
Construction work-in-progress	0	208	208	0	205	205
Net utility plant	683	6,392	7,075	753	6,514	7,267
Cash	579	3,429	4,008	466	1,989	2,455
Accounts receivable, net	0	0	0	0	4	4
Regulatory assets	0	100	100	1	126	127
Other assets	0	0	0	0	0	0
Total assets	1,262	9,921	11,183	1,220	8,633	9,853
Liabilities:						
Long-term liabilities	0	0	0	0	0	0
Customer advances and other liabilities	1	31	32	1	54	55
Deferred revenue	0	0	0	0	0	0
Accounts payable	0	53	53	0	12	12
Environmental cleanup liabilities	0	83	83	0	83	83
Total liabilities	1	167	168	1	149	150
Capitalization:						
Congressional appropriations	9,495	(3,710)	5,785	9,495	(3,737)	5,758
Interest on Federal investment	1,411	7,202	8,613	1,414	7,246	8,660
Transfer of property and services, net	5,283	(16,151)	(10,868)	3,826	(14,694)	(10,868)
Payments to U.S. Treasury	(3,906)	0	(3,906)	(3,906)	0	(3,906)
Payable to U.S. Treasury	12,283	(12,659)	(376)	10,829	(11,185)	(356)
Accumulated net revenues (deficit)	(11,022)	22,413	11,391	(9,610)	19,669	10,059
Total capitalization	1,261	9,754	11,015	1,219	8,484	9,703
Total liabilities and capitalization	\$1,262	\$9,921	\$11,183	\$1,220	\$8,633	\$9,853

Statements of Revenues and Expenses, and Accumulated Net Revenues

For the years ended Sept. 30, 2022 and 2021 (in thousands)

	FY 2022			FY 2021		
	WAPA	Reclamation	Total	WAPA	Reclamation	Total
Operating revenues:						
Sales of electric power	\$0	\$0	\$0	\$0	\$0	\$0
Transmission and other operating revenues	\$0	\$62	\$62	\$0	\$570	\$570
Gross operating revenues	0	62	62	0	570	570
Income transfers, net	(1,186)	3,507	2,321	(1,007)	1,660	653
Total operating revenues	(1,186)	3,569	2,383	(1,007)	2,230	1,223
Operating expenses:						
Operation and maintenance	145	699	844	54	926	980
Purchased power	0	0	0	0	0	0
Purchased transmission services	0	0	0	0	0	0
Depreciation	70	170	240	89	226	315
Administration and general	14	0	14	16	0	16
Total operating expenses	229	869	1,098	159	1,152	1,311
Net operating revenues (deficit)	(1,415)	2,700	1,285	(1,166)	1,078	(88)
Interest expenses:						
Interest on payable to U.S. Treasury	(3)	(44)	(47)	28	36	64
Allowance for funds used during construction	0	0	0	0	0	0
Net interest on payable to U.S. Treasury	(3)	(44)	(47)	28	36	64
Interest on long-term liabilities	0	0	0	0	0	0
Net interest expenses	(3)	(44)	(47)	28	36	64
Net revenues (deficit)	(1,412)	2,744	1,332	(1,194)	1,042	(152)
Accumulated net revenues (deficit):						
Balance, beginning of year	(9,610)	19,669	10,059	(8,416)	18,627	10,211
Irrigation assistance	0	0	0	0	0	0
Change in capitalization	0	0	0	0	0	0
Balance, end of year	(\$11,022)	\$22,413	\$11,391	(\$9,610)	\$19,669	\$10,059