

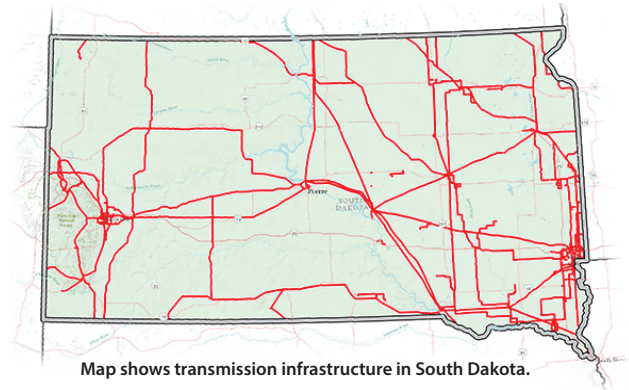
# FACT Sheet

WESTERN AREA POWER ADMINISTRATION



## WAPA serves South Dakota

Western Area Power Administration is one of four power marketing administrations within the Department of Energy that markets and transmits wholesale electricity. Its service area encompasses a 15-state region of the central and western U.S. where its 17,293-circuit-mile transmission system carries electricity from 57 hydroelectric powerplants. WAPA sells power to preference customers who in turn provide retail electric service to more than 40 million Americans.



Map shows transmission infrastructure in South Dakota.

### Powerplants and FY22 net generation (GWh):

Big Bend: 783  
 Fort Randall: 1,433  
 Gavins Point: 662  
 Oahe: 1,991

### Types of customers:

Municipalities: 33  
 State agencies: 10  
 Native American tribes: 9  
 Cooperatives: 4  
 Investor-owned utilities: 3  
 Public utility districts: 2  
 Federal agencies: 1

### Projects:

#### Loveland Area Projects

The Loveland Area Projects include the Fryingpan-Arkansas Project and the Pick-Sloan Missouri Basin Program—Western Division for marketing and rate-setting purposes.

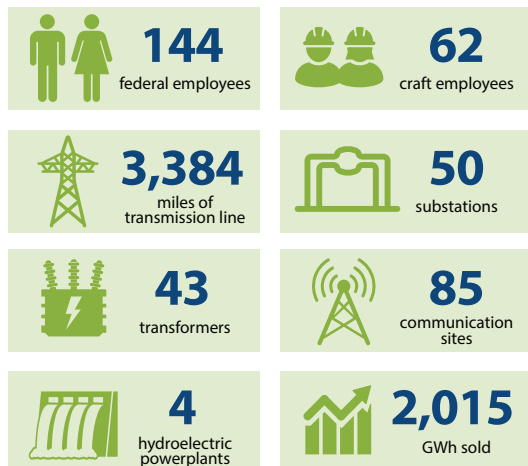
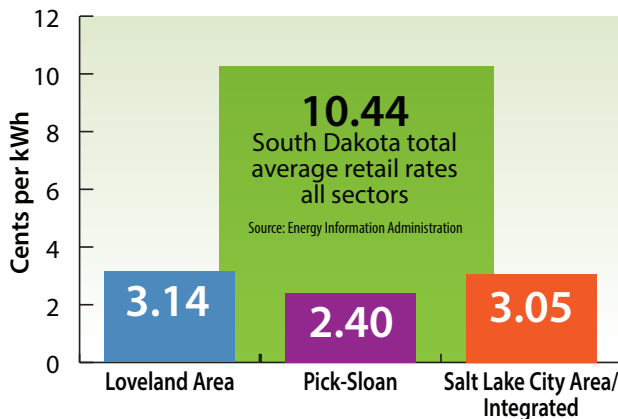
#### Pick-Sloan Missouri Basin Program—Eastern Division

Seven mainstem dams and powerplants on the Missouri River produce hydroelectric power for the Eastern Division of the Pick-Sloan Missouri Basin Program.

#### Salt Lake City Area/Integrated Projects

Power generated at the Colorado River Storage Project and from the Collbran and Rio Grande projects was combined into the Salt Lake City Area/Integrated Projects in 1987.

## WAPA wholesale rates vs. South Dakota retail rates



Disclaimer: Information presented here may have been rounded, estimated or simplified for the sake of clarity. For current data or for topics not covered on this fact sheet, contact your regional WAPA office.