

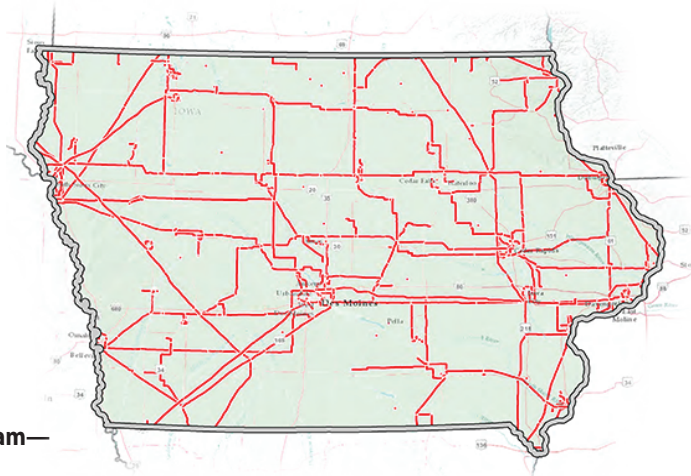
FACTSheet

WESTERN AREA POWER ADMINISTRATION



WAPA serves Iowa

Western Area Power Administration is one of four power marketing administrations within the Department of Energy that markets and transmits wholesale electricity. Its service area encompasses a 15-state region of the central and western U.S. where its 17,293-circuit-mile transmission system carries electricity from 57 hydroelectric powerplants. WAPA sells power to preference customers who in turn provide retail electric service to more than 40 million Americans.



Map shows transmission infrastructure in Iowa.

Types of customers:

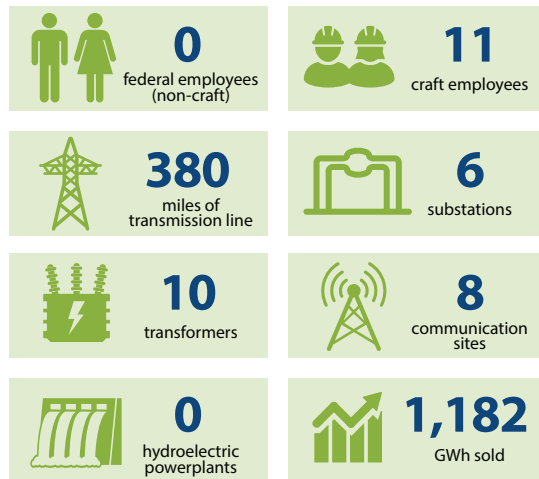
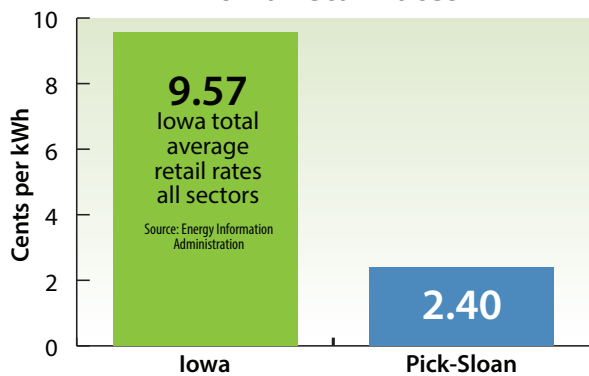
Municipalities: 49
Cooperatives: 4

Projects:

Pick-Sloan Missouri Basin Program—Eastern Division

Seven mainstem dams and powerplants on the Missouri River produce hydroelectric power for the Eastern Division of the Pick-Sloan Missouri Basin Program.

WAPA wholesale rates vs. Iowa retail rates



Disclaimer: Information presented here may have been rounded, estimated or simplified for the sake of clarity. For current data or for topics not covered on this fact sheet, contact your regional WAPA office.