

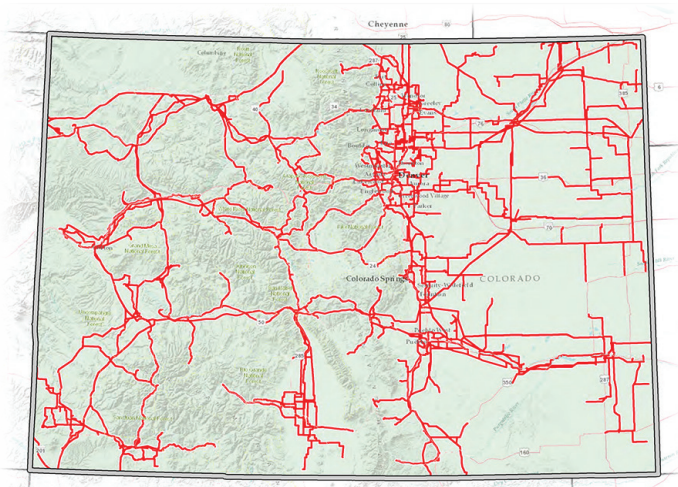
FACT Sheet

WESTERN AREA POWER ADMINISTRATION



WAPA serves Colorado

Western Area Power Administration is one of four power marketing administrations within the Department of Energy that markets and transmits wholesale electricity. Its service area encompasses a 15-state region of the central and western U.S. where its 17,293-circuit-mile transmission system carries electricity from 57 hydroelectric powerplants. WAPA sells power to preference customers who in turn provide retail electric service to more than 40 million Americans.



Map shows transmission infrastructure in Colorado.

Powerplants and FY22 net generation (GWh):

- Big Thompson: 6
- Blue Mesa: 141
- Crystal: 107
- Estes: 94
- Flatiron: 216
- Green Mountain: 23
- Lower Molina: 12
- Marys Lake: 29
- McPhee: 1
- Morrow Point: 208
- Mount Elbert: 244
- Pole Hill: 174
- Towaoc: 8
- Upper Molina: 20

Types of customers:

- Municipalities: 25
- Cooperatives: 8
- Federal agencies: 6
- Investor-owned utilities: 4
- Power marketers: 3
- Native American tribes: 2

Projects:

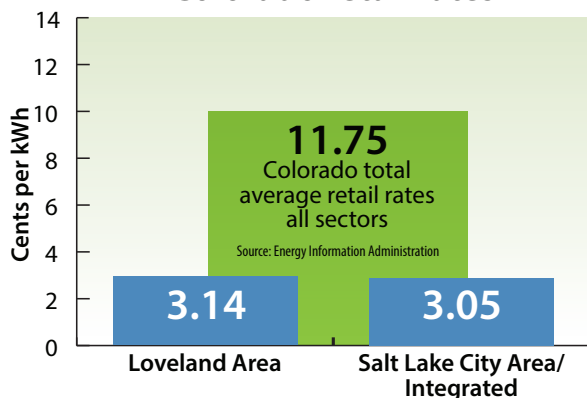
Loveland Area Projects

The Loveland Area Projects include the Fryingpan-Arkansas Project and the Pick-Sloan Missouri Basin Program—Western Division for marketing and rate-setting purposes.

Salt Lake City Area/Integrated Projects

Power generated at the Colorado River Storage Project and from the Collbran and Rio Grande projects was combined into the Salt Lake City Area/Integrated Projects in 1987.

WAPA wholesale rates vs. Colorado retail rates



434 federal employees (non-craft)	58 craft employees
2,087 miles of transmission line	55 substations
38 transformers	82 communication sites
14 hydroelectric powerplants	3,219 GWh sold

Disclaimer: Information presented here may have been rounded, estimated or simplified for the sake of clarity. For current data or for topics not covered on this fact sheet, contact your regional WAPA office.