

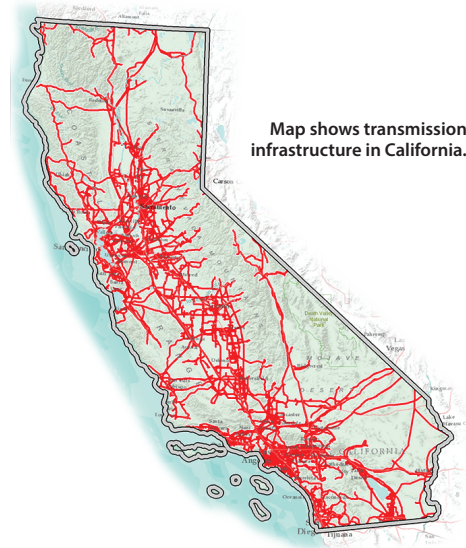
FACTSheet

WESTERN AREA POWER ADMINISTRATION



WAPA serves California

Western Area Power Administration is one of four power marketing administrations within the Department of Energy that markets and transmits wholesale electricity. Its service area encompasses a 15-state region of the central and western U.S. where its 17,293-circuit-mile transmission system carries electricity from 57 hydroelectric powerplants. WAPA sells power to preference customers who in turn provide retail electric service to more than 40 million Americans.



Powerplants and FY22 net generation (GWh):

Folsom: 380
 J.F. Carr: 148
 Keswick: 177
 Lewiston: 0
 New Melones: 269
 Nimbus: 39
 O'Neill: 1
 Parker: 214
 Shasta: 761
 Spring Creek: 82
 Stampede: 6
 Trinity: 156
 W.R. Gianelli: 39

Types of customers:

Municipalities: 24
 Native American tribes: 21
 Irrigation districts: 13
 Federal agencies: 12
 State agencies: 11
 Public utility districts: 7
 Joint power authorities: 4
 Independent system operator corporations: 2
 Power marketers: 2
 Transportation districts: 2
 Investor-owned utilities: 2
 Cooperatives: 1

Projects:

Boulder Canyon Project

WAPA's Desert Southwest region markets and transmits Boulder Canyon Project power. Power from BCP is marketed as long-term contingent capacity with associated firm energy.

Central Valley Project

WAPA's Sierra Nevada region markets the Central Valley Project. The generation varies based on hydrological conditions and other constraints that may govern operations.

Parker-Davis Project

The Parker-Davis Project is currently marketed to 35 customers in southern Nevada, Arizona and Southern California, and supplies electricity to more than 300,000 people.

Central Arizona Project

The Central Arizona Project is one of three related water development projects that make up the Colorado River Basin Project. The others are Dixie and Upper Basin projects.

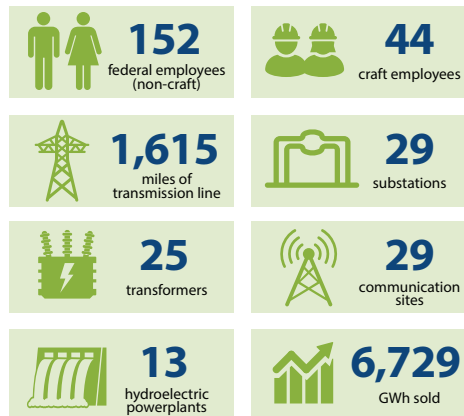
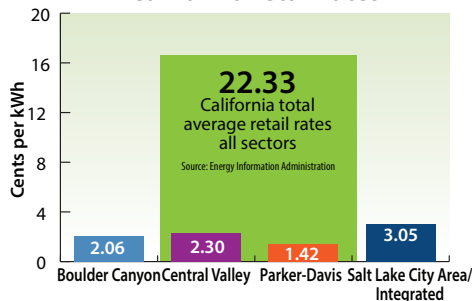
Salt Lake City Area/Integrated Projects

Power generated at the Colorado River Storage Project and from the Collbran and Rio Grande projects was combined into the Salt Lake City Area/Integrated Projects in 1987.

Washoe Project

The Washoe Project in west-central Nevada and east-central California was designed to improve runoff regulation and provide water for multiple uses.

WAPA wholesale rates vs. California retail rates



Disclaimer: Information presented here may have been rounded, estimated or simplified for the sake of clarity. For current data or for topics not covered on this fact sheet, contact your regional WAPA office.