

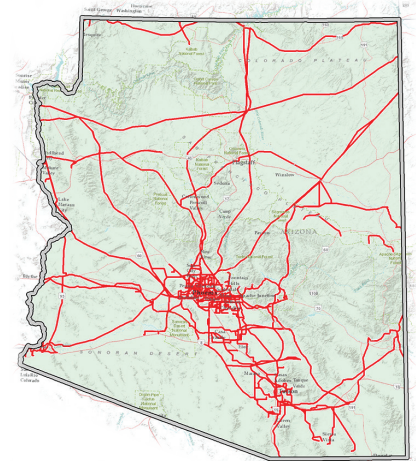
FACTSheet

WESTERN AREA POWER ADMINISTRATION



WAPA serves Arizona

Western Area Power Administration is one of four power marketing administrations within the Department of Energy that markets and transmits wholesale electricity. Its service area encompasses a 15-state region of the central and western U.S. where its 17,293-circuit-mile transmission system carries electricity from 57 hydroelectric powerplants. WAPA sells power to preference customers who in turn provide retail electric service to more than 40 million Americans.



Map shows transmission infrastructure in Arizona.

Powerplants and FY22 net generation (GWh):

Davis: 1,071

Glen Canyon: 2,580

Types of customers:

Native American tribes: 29

Irrigation districts: 17

Municipalities: 12

Federal agencies: 9

Cooperatives: 5

Investor-owned utilities: 4

State agencies: 3

Power marketers: 2

Projects:

Boulder Canyon Project

WAPA's Desert Southwest region markets and transmits Boulder Canyon Project power. Power from BCP is marketed as long-term contingent capacity with associated firm energy.

Loveland Area Projects

The Loveland Area Projects include the Fryingpan-Arkansas Project and the Pick-Sloan Missouri Basin Program—Western Division for marketing and rate-setting purposes.

Parker-Davis Project

The Parker-Davis Project is currently marketed to 35 customers in southern Nevada, Arizona and Southern California, and supplies electricity to more than 300,000 people.

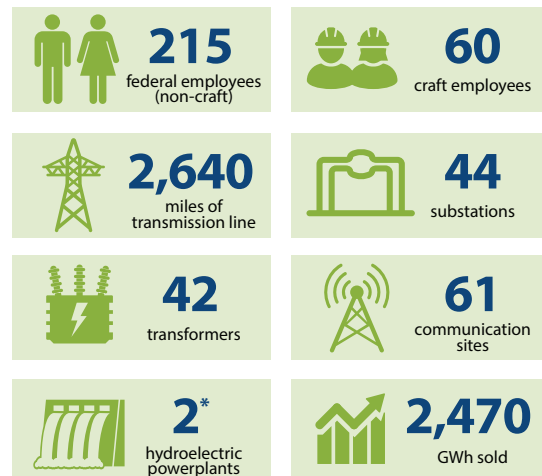
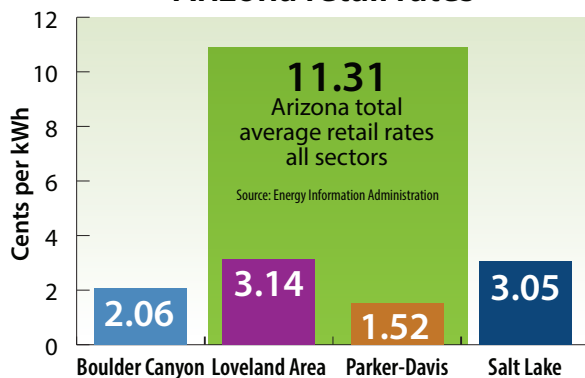
Salt Lake City Area/Integrated Projects

Power generated at the Colorado River Storage Project and from the Collbran and Rio Grande projects was combined into the Salt Lake City Area/Integrated Projects in 1987.

Central Arizona Project

The Central Arizona Project is one of three related water development projects that make up the Colorado River Basin Project. The others are Dixie and Upper Basin projects.

WAPA wholesale rates vs. Arizona retail rates



*Includes Hoover Dam located in both Arizona and Nevada.

Disclaimer: Information presented here may have been rounded, estimated or simplified for the sake of clarity. For current data or for topics not covered on this fact sheet, contact your regional WAPA office.