

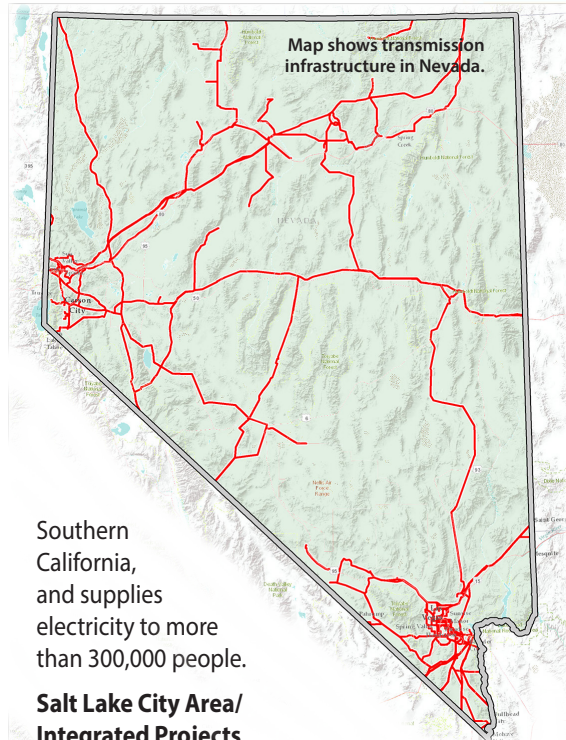
# FACTSheet

WESTERN AREA POWER ADMINISTRATION



## WAPA serves Nevada

Western Area Power Administration is one of four power marketing administrations within the Department of Energy that markets and transmits wholesale electricity. Its service area encompasses a 15-state region of the central and western U.S. where its 17,272-circuit-mile transmission system carries electricity from 57 hydroelectric powerplants. WAPA sells power to preference customers who in turn provide retail electric service to more than 40 million Americans.



### Powerplants and FY20 net generation (GWh):

Hoover: 3,243

### Types of customers:

- Native American tribes: 5
- State agencies: 3
- Joint power authorities: 2
- Federal agencies: 2
- Municipalities: 1
- Power marketers: 1

### Projects:

#### Boulder Canyon Project

WAPA's Desert Southwest region markets and transmits Boulder Canyon Project power. Power from BCP is marketed as long-term contingent capacity with associated firm energy.

#### Loveland Area Projects

The Loveland Area Projects include the Frypan-Arkansas Project and the Pick-Sloan Missouri Basin Program—Western Division for marketing and rate-setting purposes.

#### Parker-Davis Project

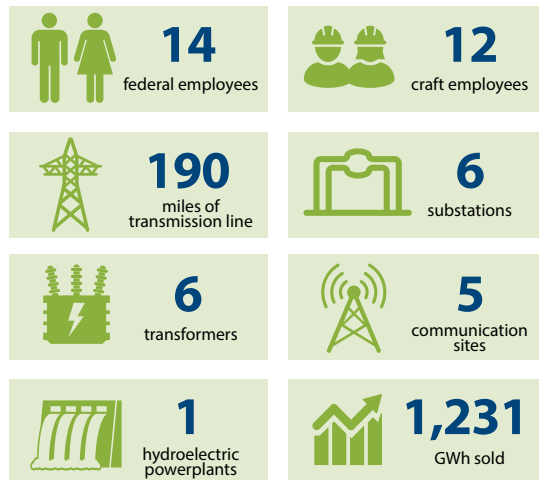
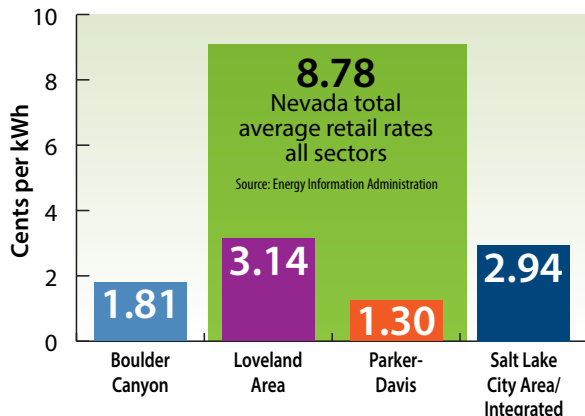
The Parker-Davis Project is currently marketed to 34 customers in southern Nevada, Arizona and

Southern California, and supplies electricity to more than 300,000 people.

#### Salt Lake City Area/Integrated Projects

Power generated at the Colorado River Storage Project and from the Collbran and Rio Grande projects was combined into the Salt Lake City Area/Integrated Projects in 1987.

## WAPA wholesale rates vs. Nevada retail rates



*Disclaimer: Information presented here may have been rounded, estimated or simplified for the sake of clarity. For current data or for topics not covered on this fact sheet, contact your regional WAPA office.*