

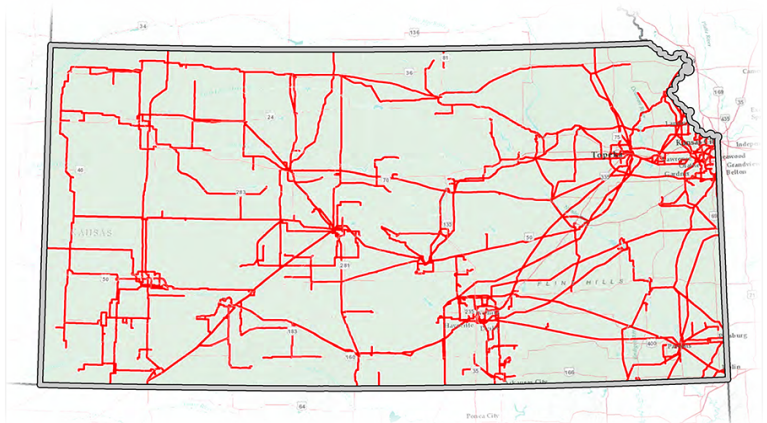
FACTSheet

WESTERN AREA POWER ADMINISTRATION



WAPA serves Kansas

Western Area Power Administration is one of four power marketing administrations within the Department of Energy that markets and transmits wholesale electricity. Its service area encompasses a 15-state region of the central and western U.S. where its 17,272-circuit-mile transmission system carries electricity from 57 hydroelectric powerplants. WAPA sells power to preference customers who in turn provide retail electric service to more than 40 million Americans.



Map shows transmission infrastructure in Kansas.

Types of customers:

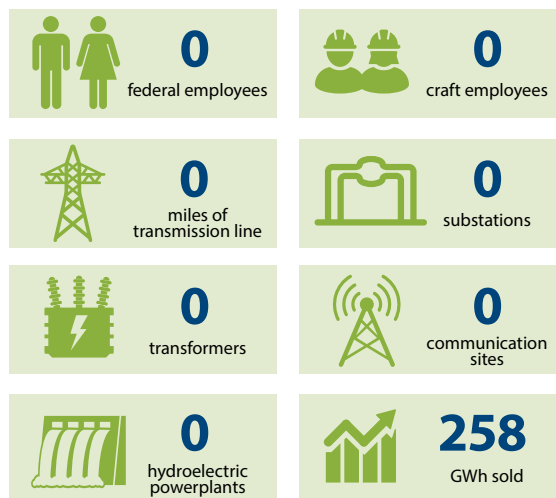
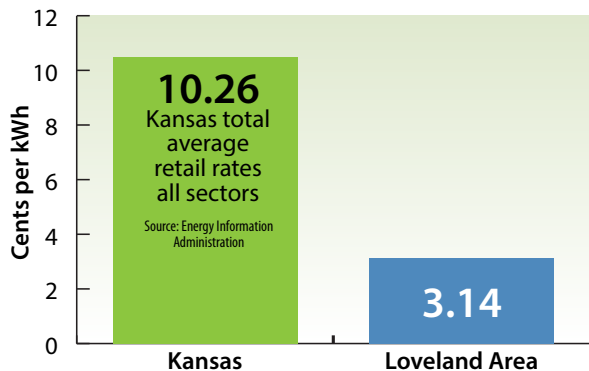
- Municipalities: 7
- Native American tribes: 4
- Cooperatives: 4
- Joint power authorities: 1

Projects:

Loveland Area Projects

The Loveland Area Projects include the Fryingpan-Arkansas Project and the Pick-Sloan Missouri Basin Program—Western Division for marketing and rate-setting purposes.

WAPA wholesale rates vs. Kansas retail rates



Disclaimer: Information presented here may have been rounded, estimated or simplified for the sake of clarity. For current data or for topics not covered on this fact sheet, contact your regional WAPA office.